



UNIVERSITÀ
DEGLI STUDI
DI PADOVA

DNS DEPARTMENT OF NEUROSCIENCE



ANATOMY AND PHYSIOLOGY (C.I.)

HUMAN ANATOMY (Mod. A)

Prof

S i l v i a B a r b o n



PhD in

*Tissue Engineering
and Regenerative Medicine*

INTRODUCTION to the COURSE



Prof. SILVIA BARBON

Email: silvia.barbon@unipd.it

Phone: 049 827 2325

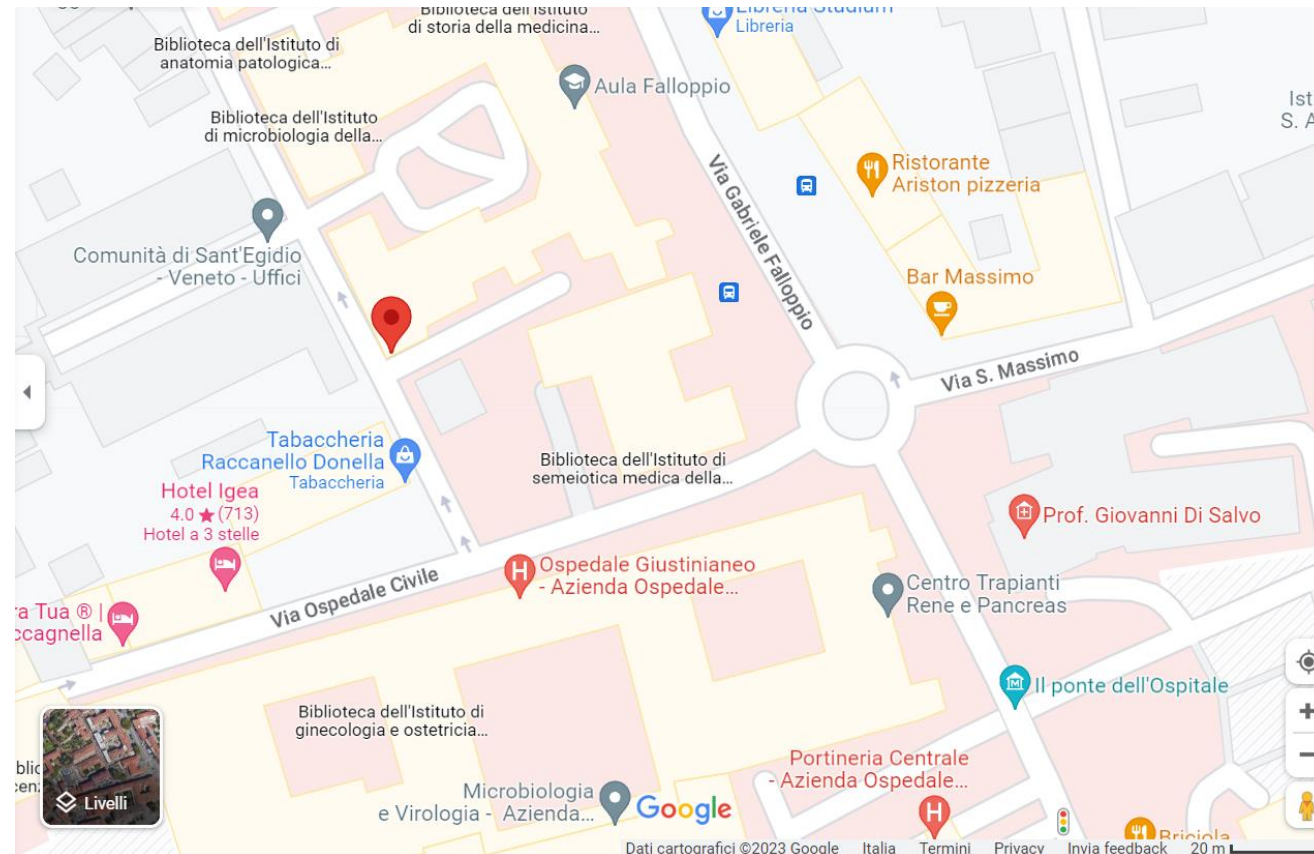
Department of NEUROSCIENCE

Section of Human Anatomy

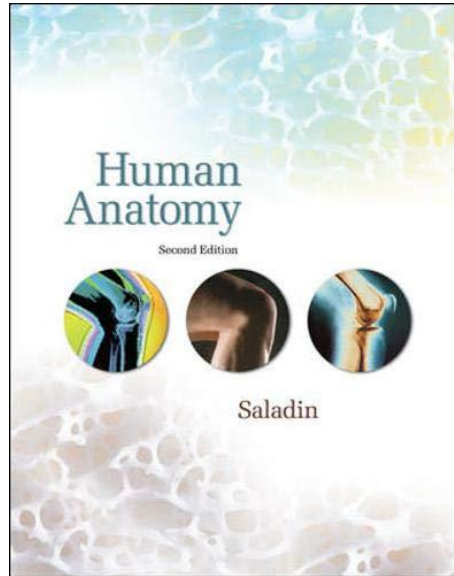
Via A. Gabelli, 65 e 67 – 35121 Padova



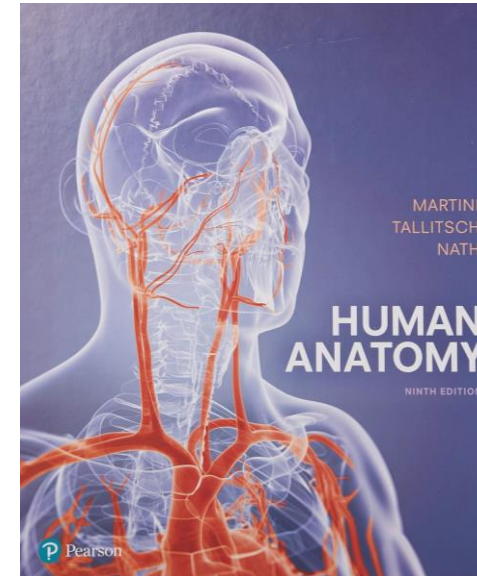
Via Aristide Gabelli, 67



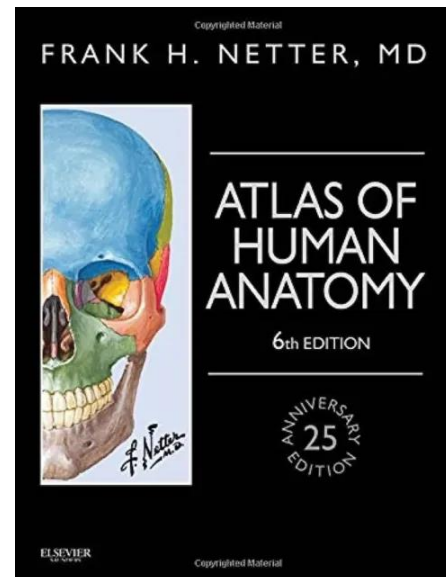
REFERENCE BOOKS



Human Anatomy
Kenneth S. Saladin

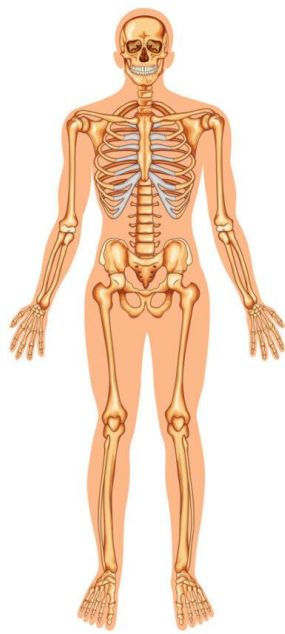


Human Anatomy
Frederic H. Martini
Robert B. Tallitsch
Judi L. Nath

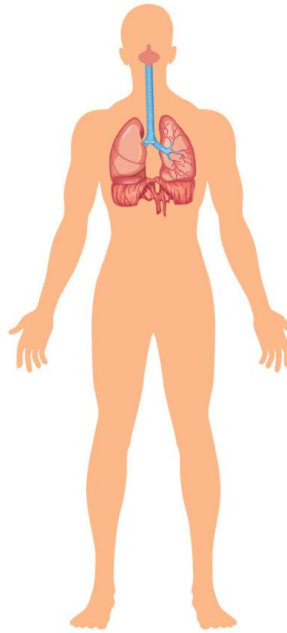


NETTER
Atlas of Human Anatomy
Frank H. Netter

TABLE OF CONTENTS



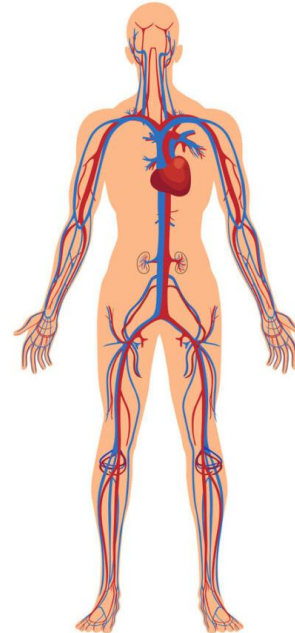
Skeletal System



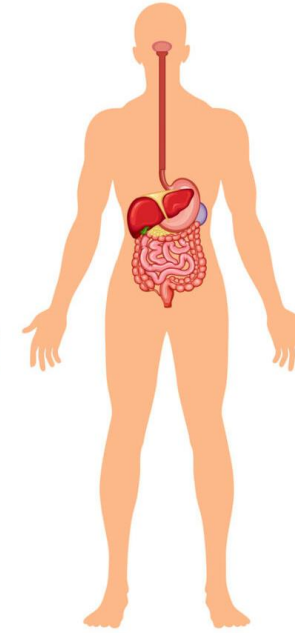
Respiratory System



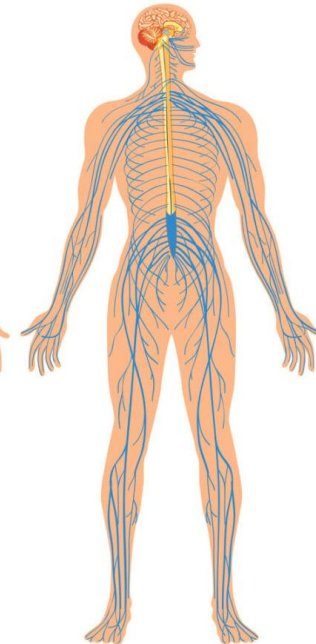
Muscular System



Circulatory System



Digestive System



Nervous System

- ANATOMICAL TERMINOLOGY
- THE SKELETAL SYSTEM
- THE MUSCULAR SYSTEM
- THE CARDIOVASCULAR SYSTEM
- THE RESPIRATORY SYSTEM

- THE NERVOUS SYSTEM
- THE DIGESTIVE SYSTEM
- THE URINARY SYSTEM

Prof.
Aron Emmi