

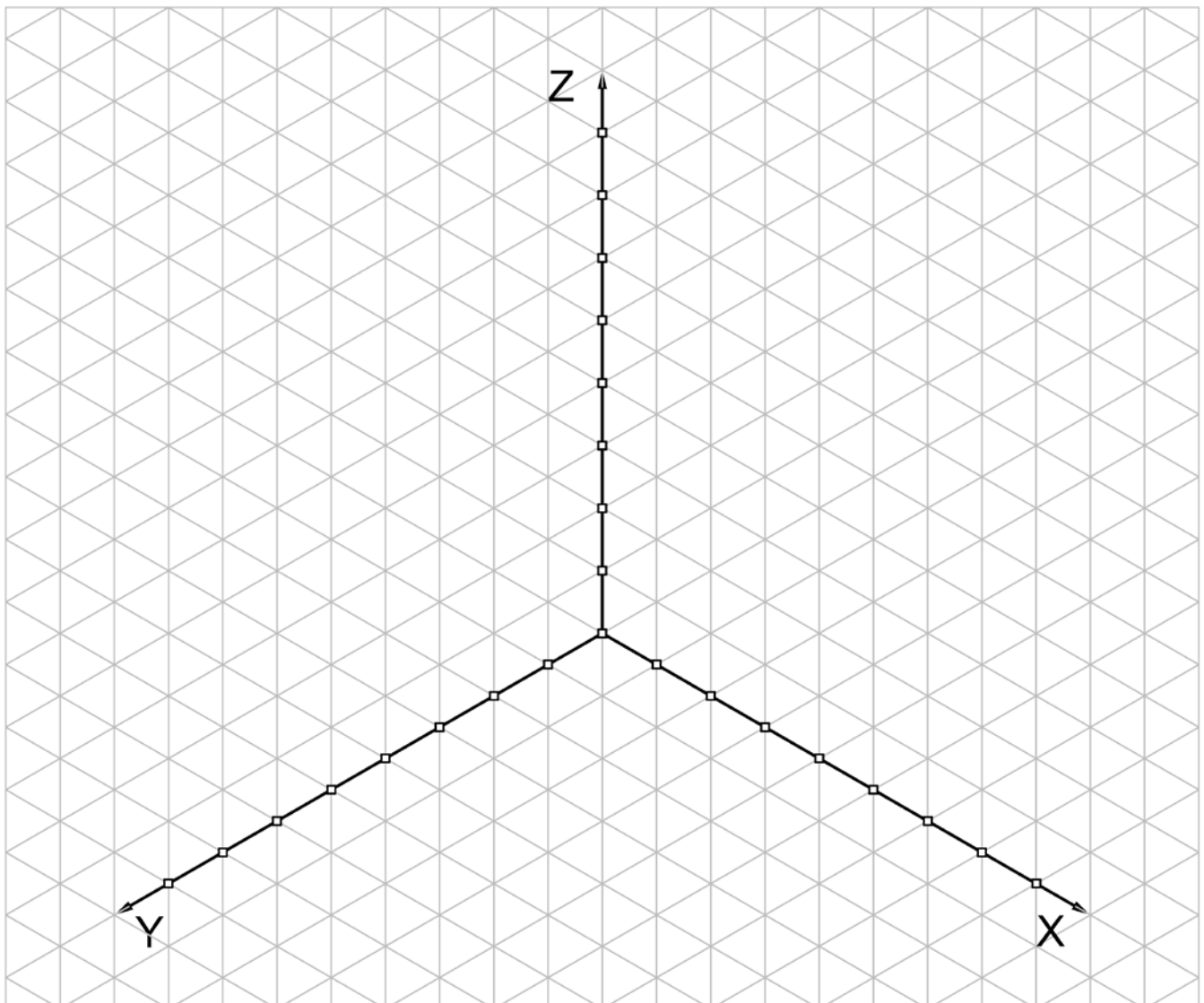
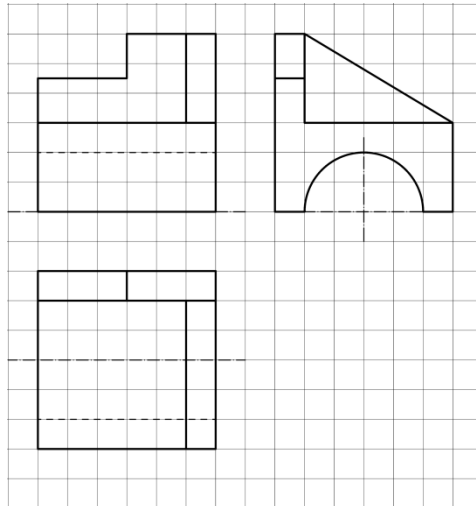
Corso di Disegno Tecnico Industriale Simulazione 1° Prova Intermedia

Tema A

Studente:

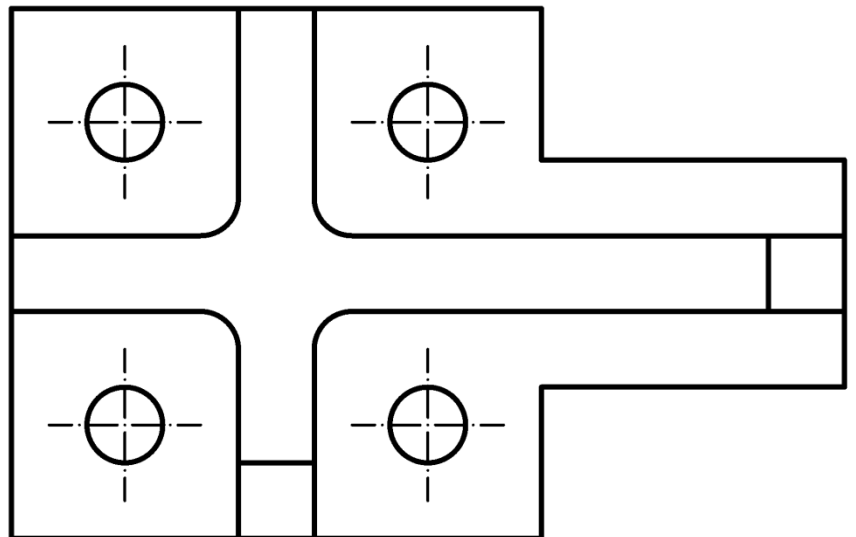
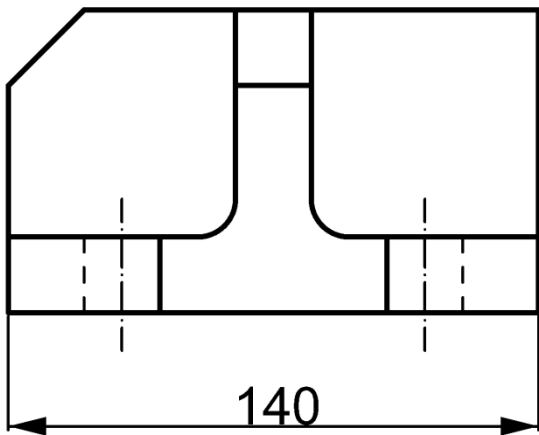
COGNOME \_\_\_\_\_ NOME \_\_\_\_\_ Matr. \_\_\_\_\_ Cs.Laurea \_\_\_\_\_

1) Rappresentare, a mano libera, in assonometria isometrica l'oggetto sotto riportato in P.O.



2) Data la seguente proiezione ortogonale realizzata con il metodo E:

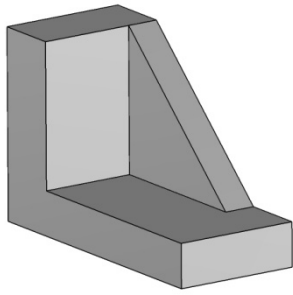
- disegnare la terza vista (è possibile utilizzare una rappresentazione assonometrica aggiuntiva per la corretta interpretazione della geometria)
- identificare la scala e riportarla ove opportuno,
- definire uno schema completo di quotatura segnalando opportunamente eventuali quote ausiliarie (arrotondare le dimensioni rilevate con il righello al millimetro e le dimensioni angolari al grado).



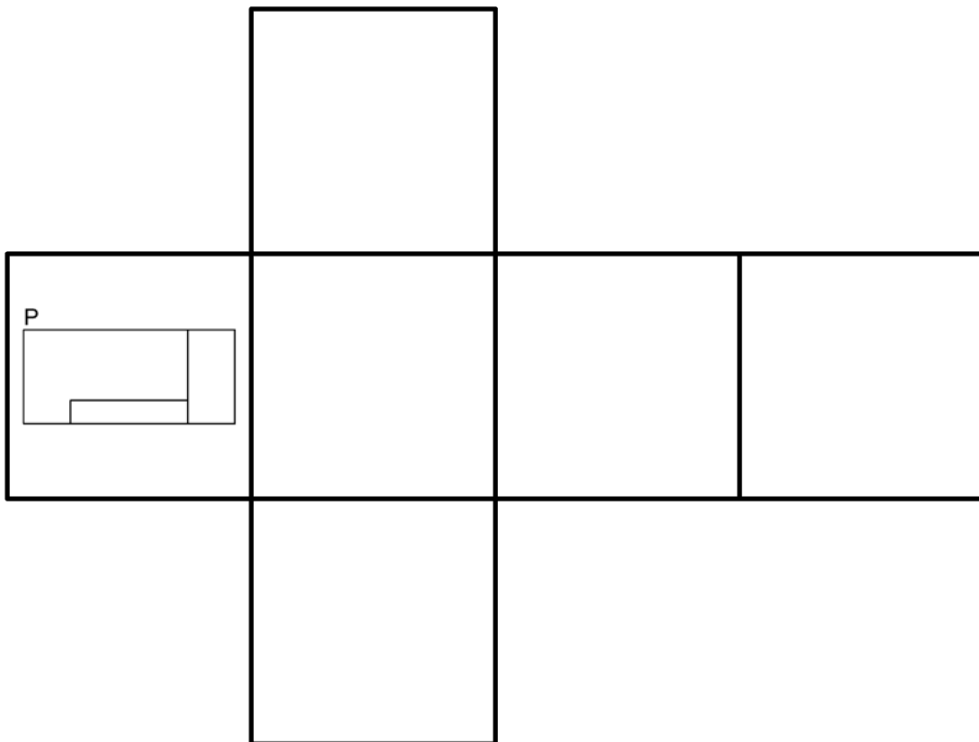
3) Date le viste dell'oggetto in assonometria (nella pagina accanto), inserire le lettere corrette negli schemi di proiezione ortogonale secondo i metodi E ed A.

The image displays 20 orthographic projection templates, labeled A through X, arranged in a grid. Each template is a rectangle with various lines (solid and dashed) indicating the placement of views. The templates are organized into four main groups:

- Group 1 (A-D):** Four templates (A, B, C, D) showing different orientations of a rectangular object with a diagonal cut. A and B are top views, C and D are front views.
- Group 2 (E-H):** Four templates (E, F, G, H) showing different orientations of a rectangular object with a diagonal cut. E and G are front views, F and H are side views.
- Group 3 (I-L):** Four templates (I, J, K, L) showing different orientations of a rectangular object with a vertical cut. I and K are front views, J and L are side views.
- Group 4 (M-X):** Eight templates (M, N, O, P, Q, R, S, T, U, V, W, X) showing different orientations of a rectangular object with a horizontal cut. M and P are front views, N and O are side views, Q and R are top views, S and T are front views, U and V are side views, W and X are front views.



Metodo E



Metodo A

