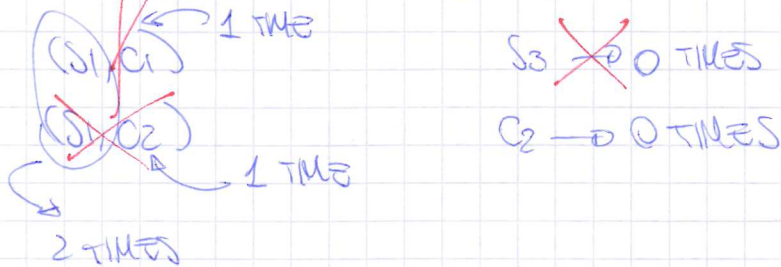
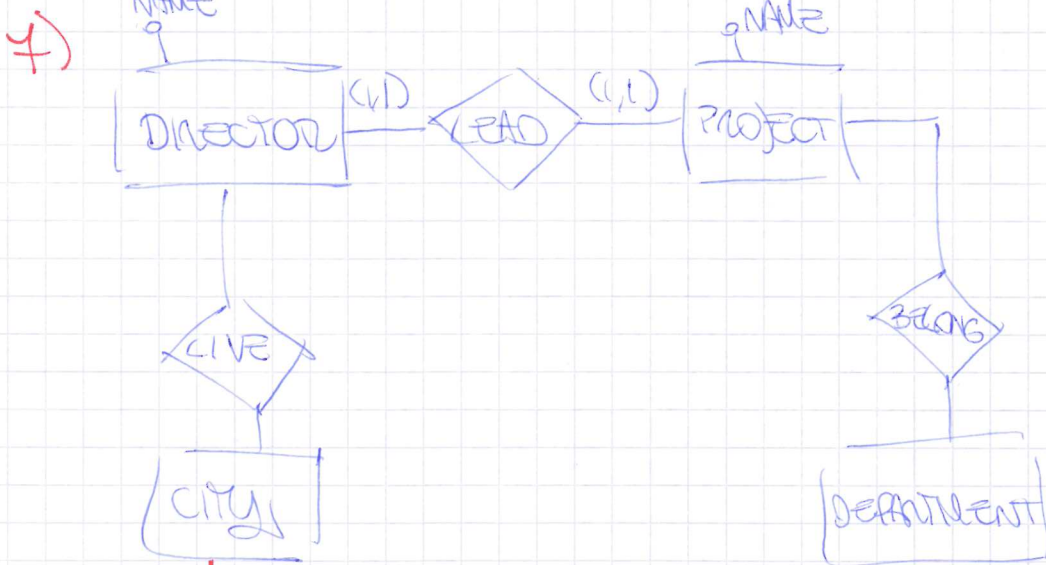


STUDENT = {s1, s2, s3}      COURSE = {c1, c2}



~~(s1, c1)~~ CARDINALITY CONSTRAINTS DO NOT ALLOW TO BREAK THE RULES OF EXTENSIONAL SEMANTICS



WHAT IF WE COLLAPSE DIRECTOR & PROJECT INTO A SINGLE ENTITY?



WHAT IF DIRECTOR LIVE IN A DIFFERENT CITY OR BELONG TO A DIFFERENT DEPARTMENT?

BAD MODELING