

National Yang Ming Chiao Tung University (Taiwan)

ULISSE PROGRAMME

ERASMUS CODE: -

EXCHANGE POSITIONS: **3 per semester**

MAX DURATION OF THE STAY: **1 academic year**

REQUIREMENTS: **English**

EXAMS/FINAL PROJECT: **both**

STUDY LEVEL: **Bachelor/Master**

CONSTRAINTS: **none**

CONTACT PERSON: **N. Laurenti**

PROS

- Fully serviced campus
- Hsinchu Science & Industry Park
- Master & Ph.D. programs
- Something completely different!

nil@dei.unipd.it

CONS

- Limited funding



National Yang Ming Chiao Tung University (Taiwan)

ULISSE PROGRAMME

UNIVERSITY WEBSITE: <https://www.nycu.edu.tw/en/>

LIST OF EXAMS OFFERED BY THE FOREIGN
UNIVERSITY: <https://timetable.nycu.edu.tw/>

CONTACT PERSON ABROAD:

Prof. Stefano Rini stefano@nycu.edu.tw

RESPONSIBLE FOR NCTU EXCHANGE STUDENTS :

Ms. Lily Cheng lilycheng@nycu.edu.tw

OTHER INFORMATION:

NYCU has excellent programs in all areas of Information Engineering, but is especially outstanding in Electrical and Electronics Engineering.

It offers free Chinese language courses.

Plenty of on-campus and off-campus accommodation.

Stefano Rini is a wonderful advisor!



NYCU (Taiwan) - students' reviews

- NYCU offers free Chinese courses. It is a good opportunity to learn a new, complex but very useful language spoken by 1 billion of people
- It is also a unique opportunity to improve your English, there are very few Italian people in Taiwan and you are forced to speak English every day (different from Erasmus experiences in Europe)
- Less theoretical classes (especially master classes) more practical approach: you will have the chance to conduct research experiments in NYCU high-tech laboratories
- In all of the classes you will have to submit homeworks, assignment and to do presentations
- Wide offering of classes taught in English
- Possibility to travel around Taiwan and to Far East Countries
- Very different climate

Kyoto Institute of Technology (Japan)

ULISSE PROGRAMME

ERASMUS CODE: -

EXCHANGE POSITIONS: **2 per semester**

MAX DURATION OF THE STAY: **1 academic year**

REQUIREMENTS: **English**

EXAMS/FINAL PROJECT: **Final Project**

STUDY LEVEL: **MD Electronics**

CONSTRAINTS: **only master thesis**

CONTACT PERSON: **M. Meneghini**

matteo.meneghini@unipd.it

PROS

CONS

Pros and cons in the following slides...



Kyoto Institute of Technology (Japan)

ULISSE PROGRAMME

UNIVERSITY WEBSITE:

https://www.kit.ac.jp/en/prospective_student/

LIST OF EXAMS OFFERED BY THE FOREIGN

UNIVERSITY:

<https://www.kit.ac.jp/en/academic-programs/>

CONTACT PERSON ABROAD:

Prof. Giuseppe Pezzotti

ses@jim.kit.ac.jp



UNIVERSITÀ
DEGLI STUDI
DI PADOVA



DEPARTMENT OF
INFORMATION
ENGINEERING

京都工芸繊維大学
KYOTO INSTITUTE OF TECHNOLOGY

Salata Carlo

- Home page KIT – Kyoto Institute of Technolog

<https://www.kit.ac.jp/en/>



京都工芸繊維大学
KYOTO INSTITUTE OF TECHNOLOGY

- KIT Dormitory – Marikouji Kaikan - residence policies:

<https://www.kit.ac.jp/wp/wp-content/uploads/2015/06/Residence-Policies-201910.pdf>

- KIT official Facebook page

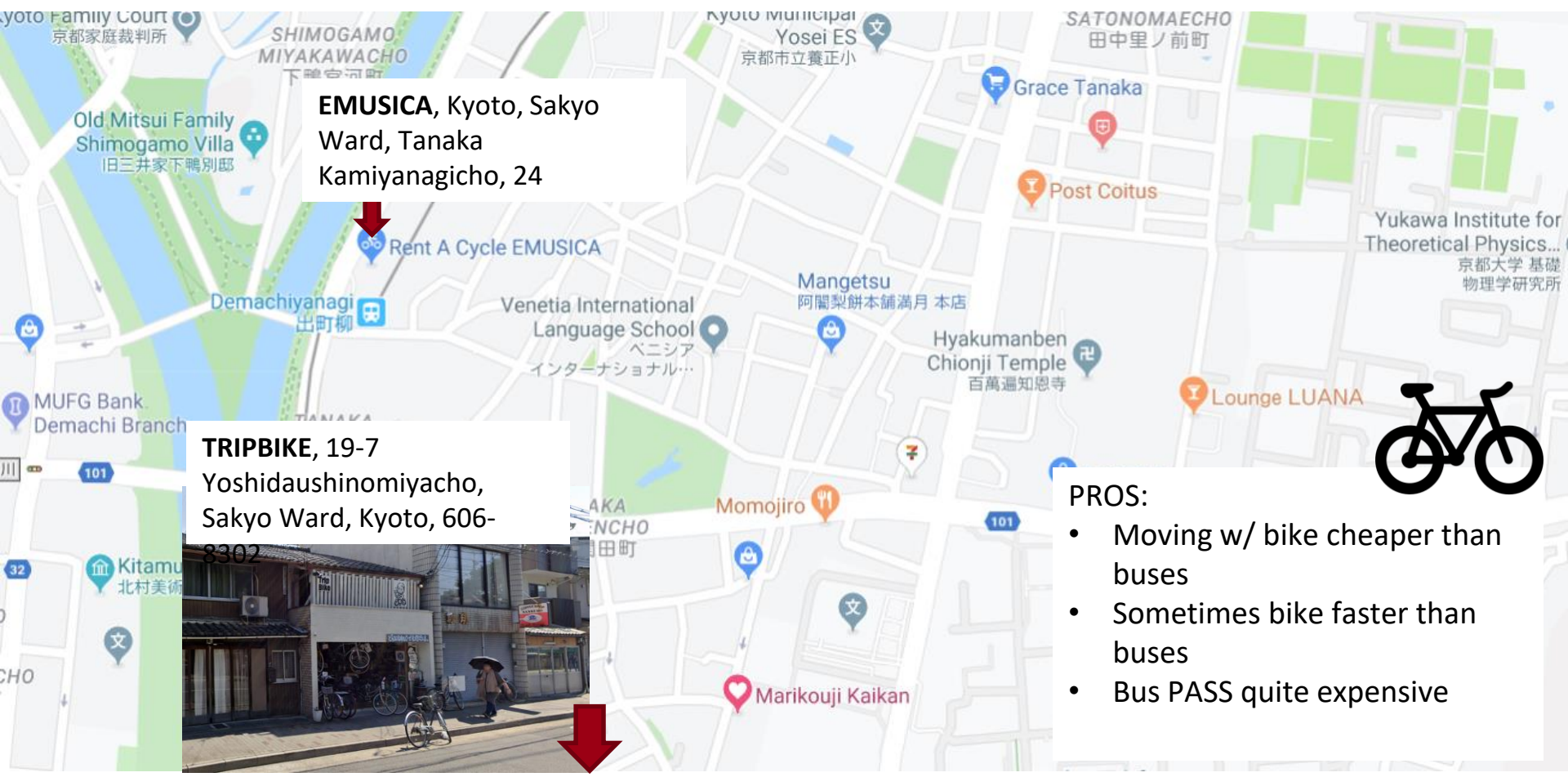
https://www.facebook.com/KIT.Kyoto.International/?ref=br_rs

- Consolato Generale del Giappone (Milano)

https://www.milano.it.emb-japan.go.jp/itprtop_it/index.html

- Do private health insurance before leaving Italy
- Don't care about bed linens, if you will stay at Marikouji Kaikan dormitory there are provided
- Italian citizens who are staying for more than 3 months in Japan need a visa, do not worry just follow the KIT's international affairs office instructions.
- If you are looking for a private accommodation consider that, usually, in Japan the houses are sold empty and you rent only the «walls»
- A great deal is to apply for Marikouji Kaikan, cheap, english language concierge service, international guests (a lot of new friends)

MAP OF SUGGESTED BIKE SHOP



EMUSICA, Kyoto, Sakyo Ward, Tanaka Kamiyanagicho, 24

TRIPBIKE, 19-7 Yoshidaushinomiya-cho, Sakyo Ward, Kyoto, 606-8302



- PROS:**
- Moving w/ bike cheaper than buses
 - Sometimes bike faster than buses
 - Bus PASS quite expensive

The **most important week** is the first week of the beginning of the academic semester: KIT's international affairs office will schedule for you several important dates. Do not miss them.

You will register at immigration office, you will register your address on the Residence Card (very important ID) and also you will apply for the **National Insurance** (mandatory)

Do not miss to pay the slip for the **bicycle insurance** (if you have one), very important!





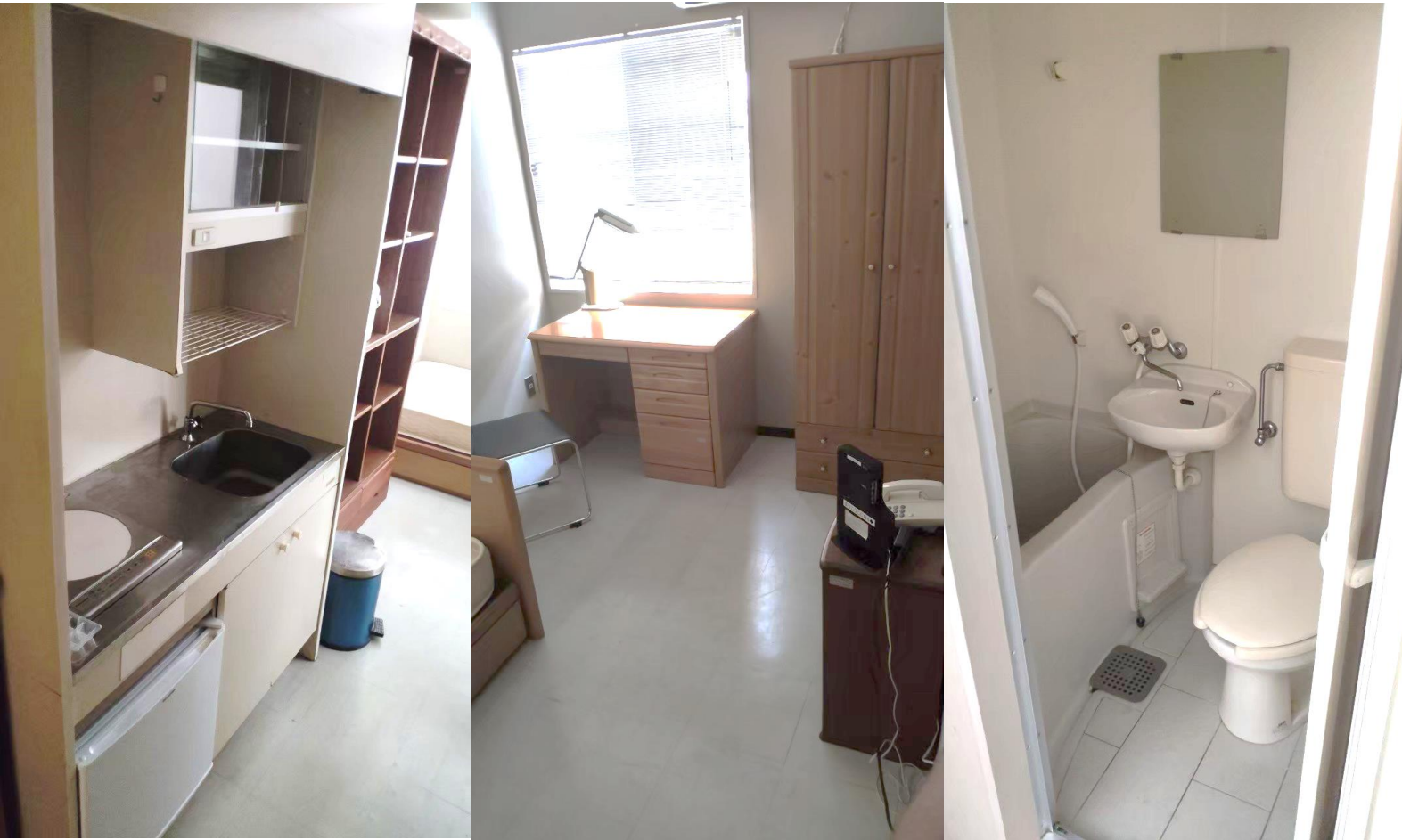


あ	い	う	え	お
a	i	u	e	o
か	き	く	け	こ
ka	ki	ku	ke	ko
さ	し	す	せ	そ
sa	shi	su	se	so
た	ち	つ	て	と
ta	chi	tsu	te	to
な	に	ぬ	ね	の
na	ni	nu	ne	no
は	ひ	ふ	へ	ほ
ha	hi	fu	he	ho
ま	み	む	め	も
ma	mi	mu	me	mo
や		ゆ		よ
ya		yu		yo
ら	り	る	れ	ろ
ra	ri	ru	re	ro
わ				を
wa				wo
ん	ひらがな Hiragana			
n				

が	ぎ	ぐ	げ	ご	平 仮 名
ga	gi	gu	ge	go	
ざ	じ	ず	ぜ	ぞ	
za	ji	zu	ze	zo	
だ	ぢ	づ	で	ど	
da	ji	zu	de	do	
ば	び	ぶ	べ	ぼ	
ba	bi	bu	be	bo	
ぱ	ぴ	ぷ	ぺ	ぽ	
pa	pi	pu	pe	po	
きゃ	きゅ	きょ	ぎゃ	ぎゅ	ぎょ
kya	kyu	kyo	gya	gyu	gyo
にゃ	にゅ	にょ	ひゃ	ひゅ	ひょ
nya	nyu	nyo	hya	hyu	hyo
びゃ	びゅ	びょ	ぴゃ	ぴゅ	ぴょ
bya	byu	byo	pya	pyu	pyo
みゃ	みゅ	みょ	りゃ	りゅ	りょ
mya	myu	myo	rya	ryu	ryo
じゃ	じゅ	じょ	ちゃ	ちゅ	ちょ
ja	ju	je	jo	cha	chu
ちえ	ちよ	しゃ	しゅ	しえ	しよ
che	cho	sha	shu	she	sho

During your stay, Japanese classes are offered.
They are very useful for the every day life.

COURSE	LEVEL
Japanese Communication - JC	Basic or Advance
Japanese for beginners - JB	Basic or Advance
Kind Japanese	Basic



PROS:

- Marikouji is engaging and «supercheap» compared to the other accommodations
- Kyoto is safe, lovely to live and well connected
- Living costs are not very high
- There is always something to do
- KIT always open 24h 7/7
- 100% of engaging in laboratory research or activities
- Weekly meeting very useful

CONS:

- English is not very well spoken, difficulty of communication
- In restaurants and supermarkets nobody speaks English, you have to learn a little Japanese
- The work is not very guided, it can also be a pro from a certain point of view, but could be problematic for someone.
- Difficulty of communication with professors too
- A lot of bureaucracy but it comes out after a few days of agony

Thanks to Bettini Andrea-san

For more information:

Carlo Salata

carlo.salata@studenti.unipd.it

carlo.salata@gmail.com

Yokohama National University (Japan)

Bilateral Agreements – NUOVO BANDO

ERASMUS CODE: -

EXCHANGE POSITIONS: **2 per semester**

MAX DURATION OF THE STAY: **1 academic year**

REQUIREMENTS: **English**

EXAMS/FINAL PROJECT: **Only Final Project**

STUDY LEVEL: **MD in Automation/Control Systems,
Computer Eng.**

CONSTRAINTS: **none**

CONTACT PERSONS:

Emanuele Menegatti,

Alessandro Beghi

Emanuele.menegatti@unipd.it

Alessandro.beghi@unipd.it



Yokohama National University (Japan)

Bilateral Agreements

UNIVERSITY WEBSITE: <https://www.ynu.ac.jp/english/>

<https://www.ynu.ac.jp/english/student/>

LIST OF EXAMS OFFERED BY THE FOREIGN
UNIVERSITY:

<https://www.ynu.ac.jp/english/education/>

CONTACT PERSON ABROAD:

Prof. Kenji Hasegawa

Hasegawa-kenji-py@ynu.ac.jp



Toyohashi University of Technology (Japan)

ULISSE PROGRAMME

ERASMUS CODE: -

EXCHANGE POSITIONS: **5 for 12 months**

MAX DURATION OF THE STAY: **1 academic year**

REQUIREMENTS: **English**

EXAMS/FINAL PROJECT: **Only Final Project**

STUDY LEVEL: **MD in Computer Engineering**

CONSTRAINTS: **none**

CONTACT PERSONS:

Emanuele Menegatti

Emanuele.menegatti@unipd.it



Toyohashi University of Technology(Japan)

ULISSE PROGRAMME

UNIVERSITY WEBSITE:

<https://www.tut.ac.jp/english/>

<https://www.tut.ac.jp/english/international/index.html>

LIST OF EXAMS OFFERED BY THE FOREIGN

UNIVERSITY:

https://www.tut.ac.jp/english/international/international_masters_degree_program.html

CONTACT PERSON ABROAD:

PROF. Jun Miura jun.miura@tut.jp



Monash University (Australia)

ULISSE PROGRAMME

ERASMUS CODE: -

EXCHANGE POSITIONS: 1

MAX DURATION OF THE STAY: **1 academic year**

REQUIREMENTS: **English B2**

EXAMS/FINAL PROJECT: **Only Final Project**

STUDY LEVEL: **Master Degree/PhD**

CONSTRAINTS: **none**

CONTACT PERSONS:

Maria Elena Valcher

meme@dei.unipd.it



Monash University (Australia)

ULISSE PROGRAMME

UNIVERSITY WEBSITE:

<https://www.monash.edu/>

LIST OF EXAMS OFFERED BY THE FOREIGN
UNIVERSITY:

<https://www.monash.edu/study/courses/find-a-course?f.InterestAreas%7CcourseInterestAreas=Engineering>

CONTACT PERSON ABROAD:

Lindsay Guy - Group Manager, Student and Academic
Services, Faculty of Engineering

Lindsay.Guy@monash.edu



Ecole Supérieure des Communications de Tunis

ULISSE PROGRAMME

ERASMUS CODE: -

EXCHANGE POSITIONS: **3 students + 1PhD**

MAX DURATION OF THE STAY:

students – 10 months

PhD – 12 months

REQUIREMENTS: **English B2**

(French B2 is a +)

EXAMS/FINAL PROJECT: **Only Final Project**

STUDY LEVEL: **Master Degrees and PhD**

CONSTRAINTS: **none**

CONTACT PERSONS:

Marco Santagiustina

marco.santagiustina@unipd.it



Ecole Supérieure des Communications de Tunis

ULISSE PROGRAMME

UNIVERSITY WEBSITE:

<http://www.supcom.mincom.tn/Fr/accueil> 46 3

LIST OF EXAMS OFFERED BY THE FOREIGN
UNIVERSITY:

<http://www.supcom.mincom.tn/Fr/presentation>
11 216

CONTACT PERSON ABROAD:

Rached Hamza

rached.hamza@supcom.tn



SUP'COM

Higher School of Communication of Tunis

Seoul National University (South Korea)

ULISSE PROGRAMME

ERASMUS CODE: -

EXCHANGE POSITIONS: **2**

MAX DURATION OF THE STAY: **1 academic year**

REQUIREMENTS: **English B2**

EXAMS/FINAL PROJECT: **Only PhD research**

STUDY LEVEL: **PhD**

CONSTRAINTS: **none**

CONTACT PERSONS:

Andrea Neviani

Andrea.neviani@unipd.it



Seoul National University (South Korea)

ULISSE PROGRAMME

UNIVERSITY WEBSITE:

<https://en.snu.ac.kr/index.html>

LIST OF EXAMS OFFERED BY THE FOREIGN

UNIVERSITY: <https://eng.snu.ac.kr/node/9288>

CONTACT ABROAD:

Office of Admissions

snuadmit@snu.ac.kr

