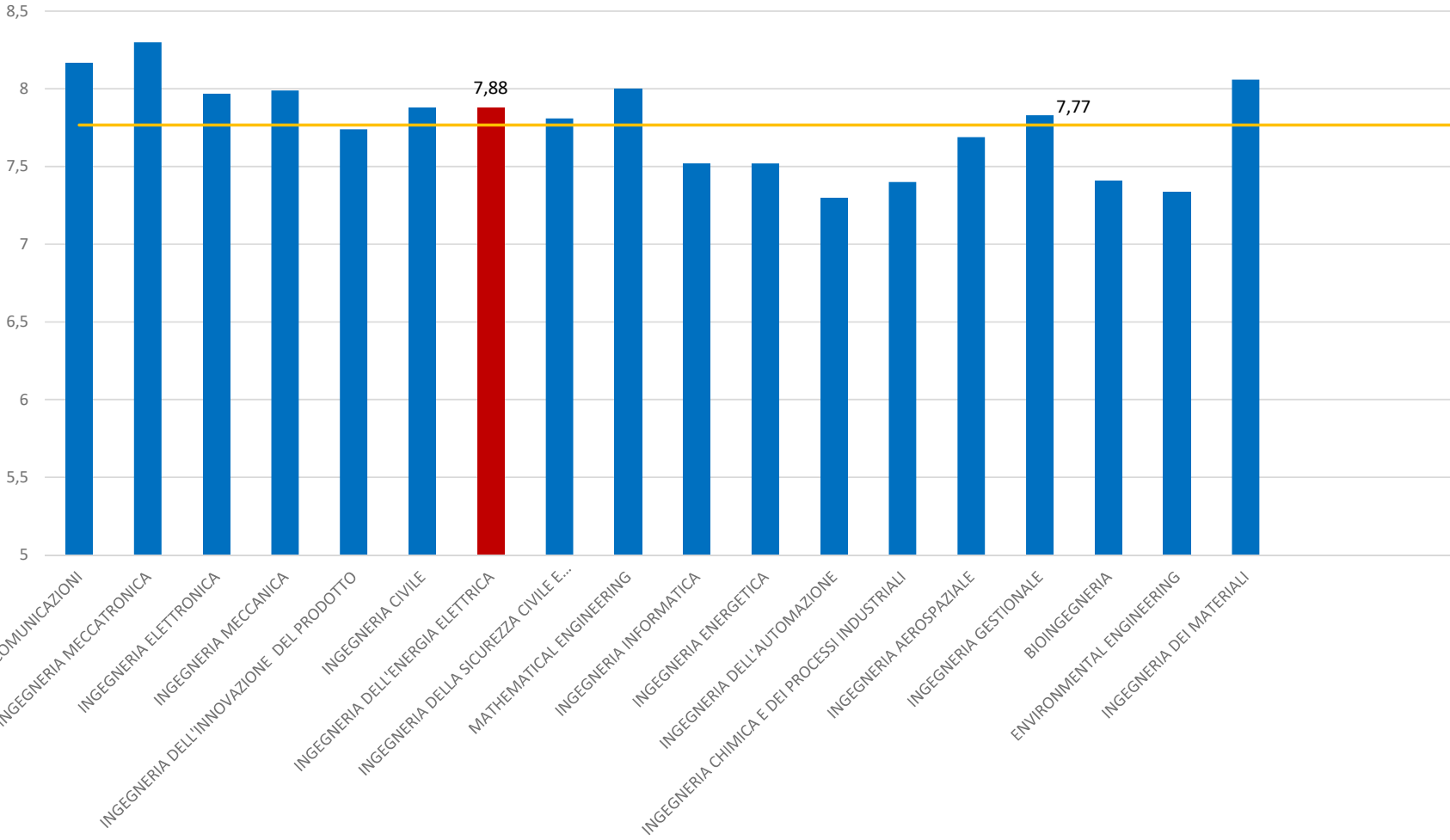
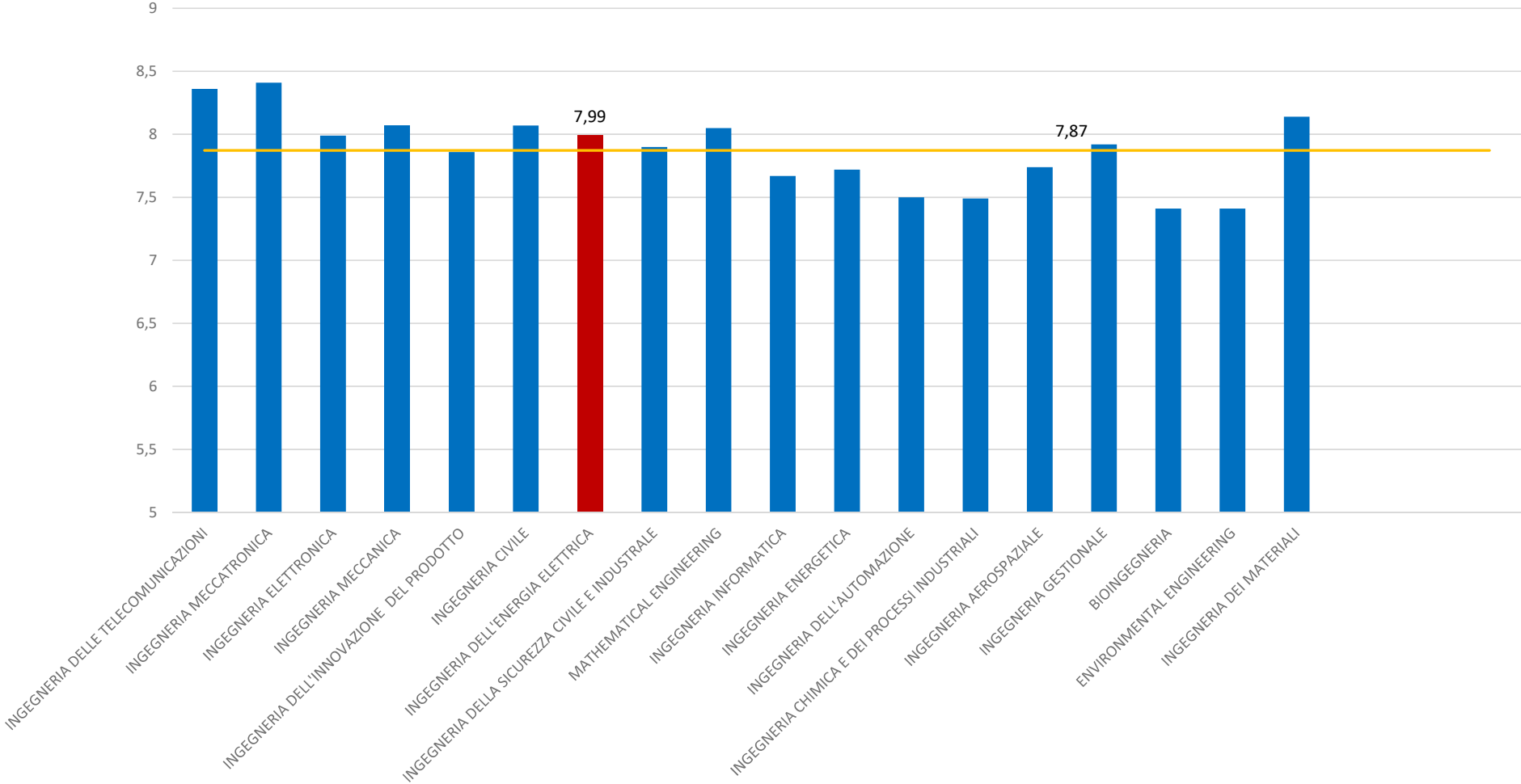


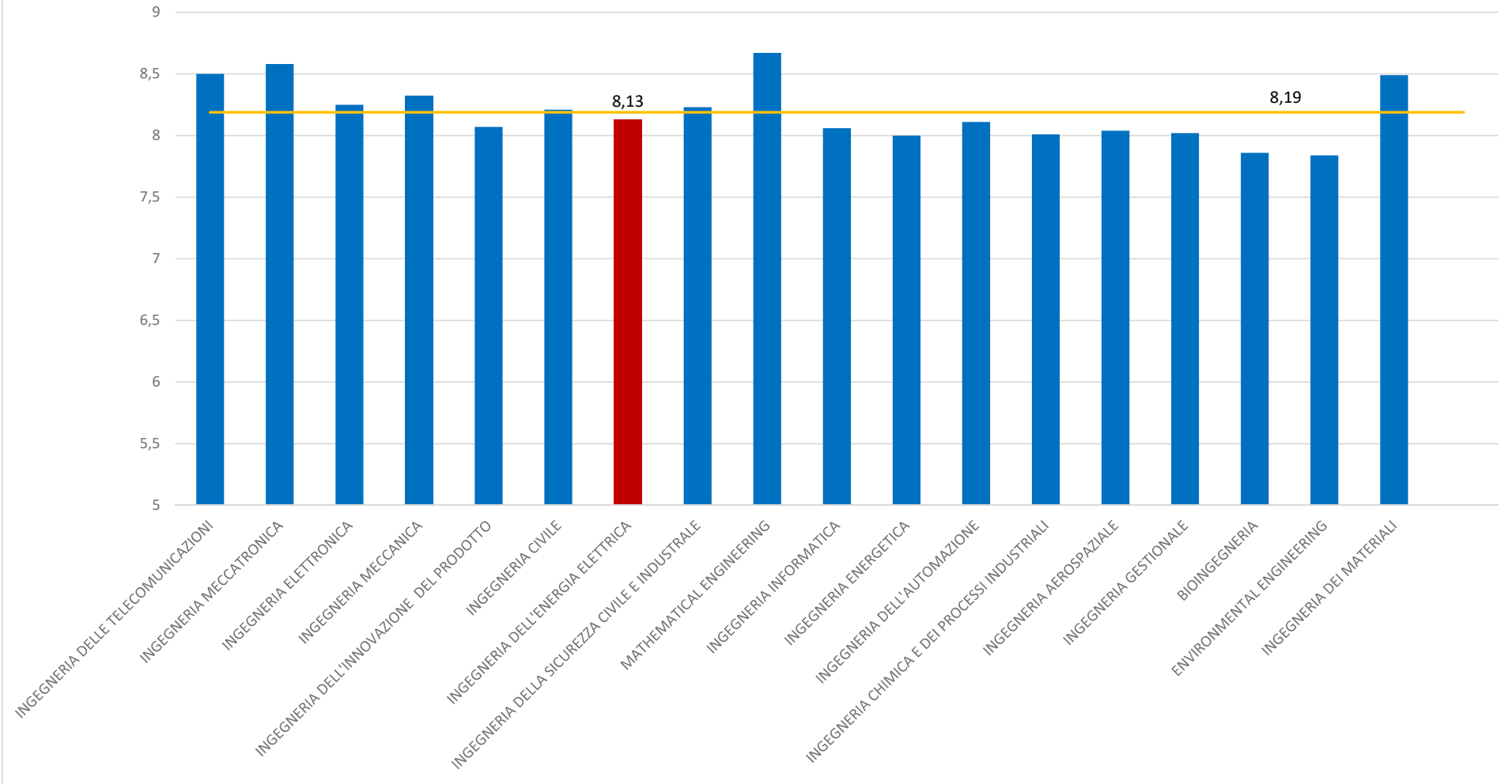
LM - Soddisfazione



LM2.Scuola Azione Didattica

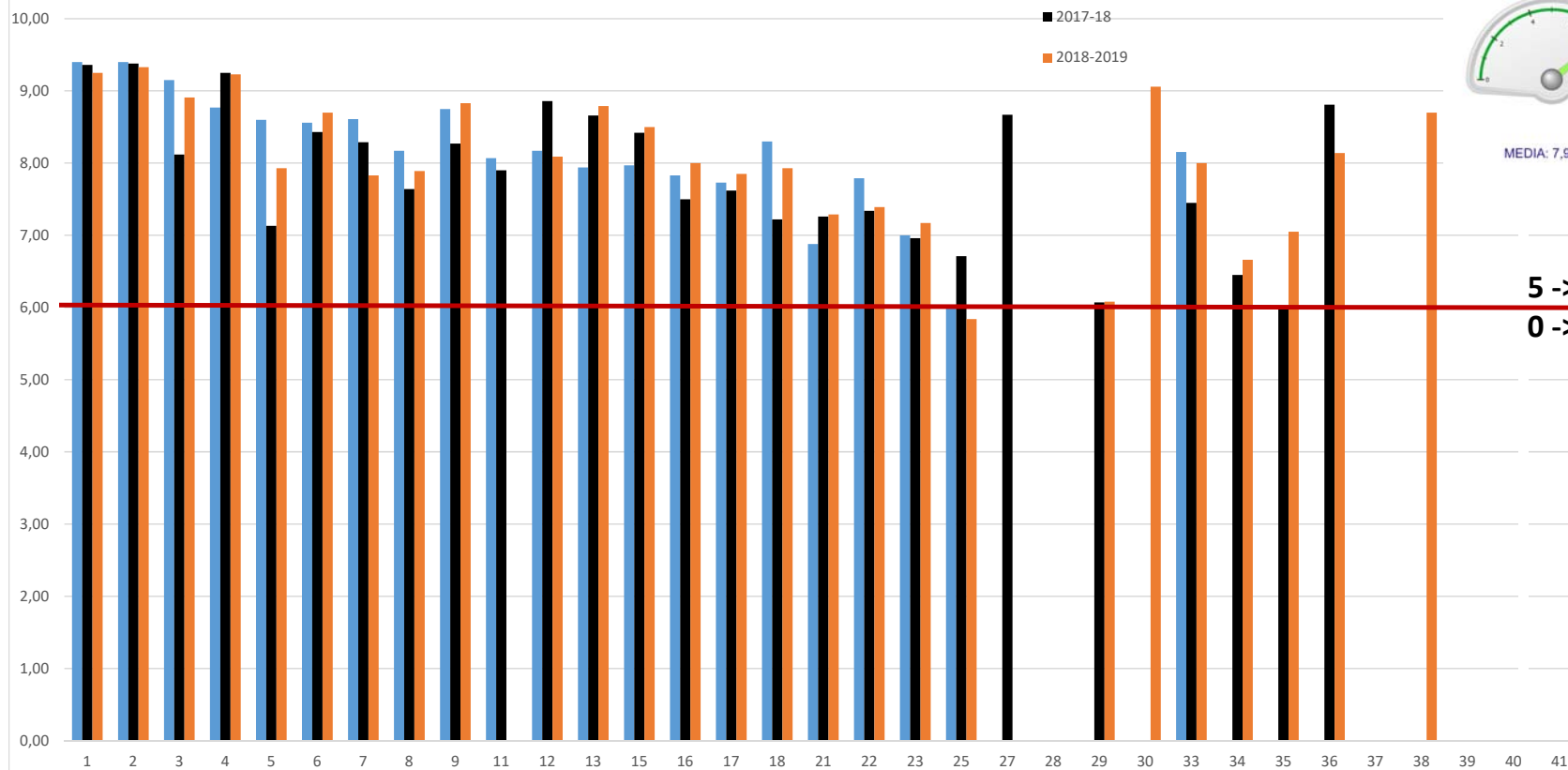


LM2.Scuola Aspetti Organizzativi



Azione didattica

Indicatore Azione Didattica



MEDIA: 7,99

5 -> 2
0 -> 1

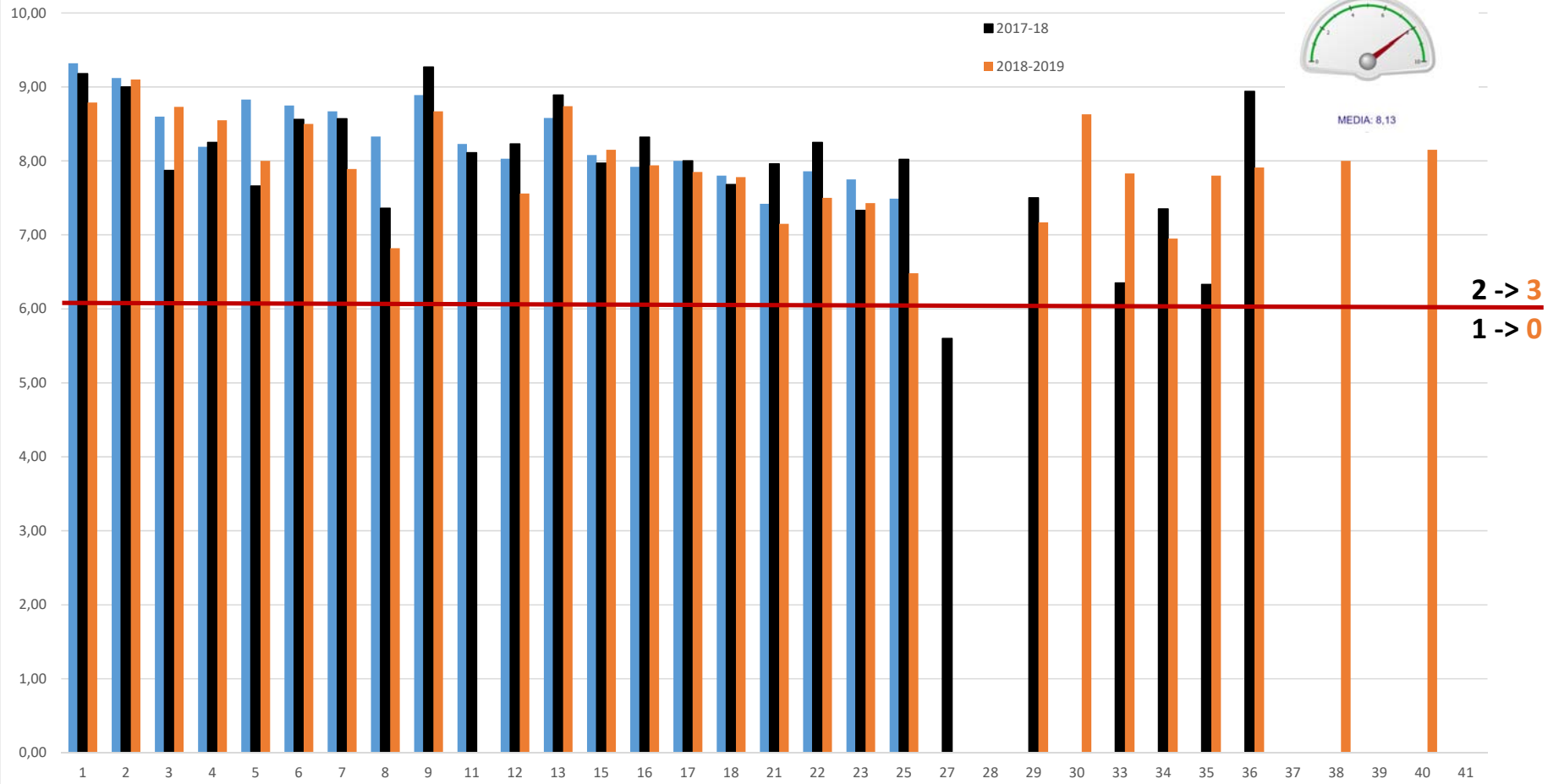
Aspetti organizzativi

Indicatore Aspetti Organizzativi

- 2016-2017
- 2017-18
- 2018-2019



MEDIA: 8,13

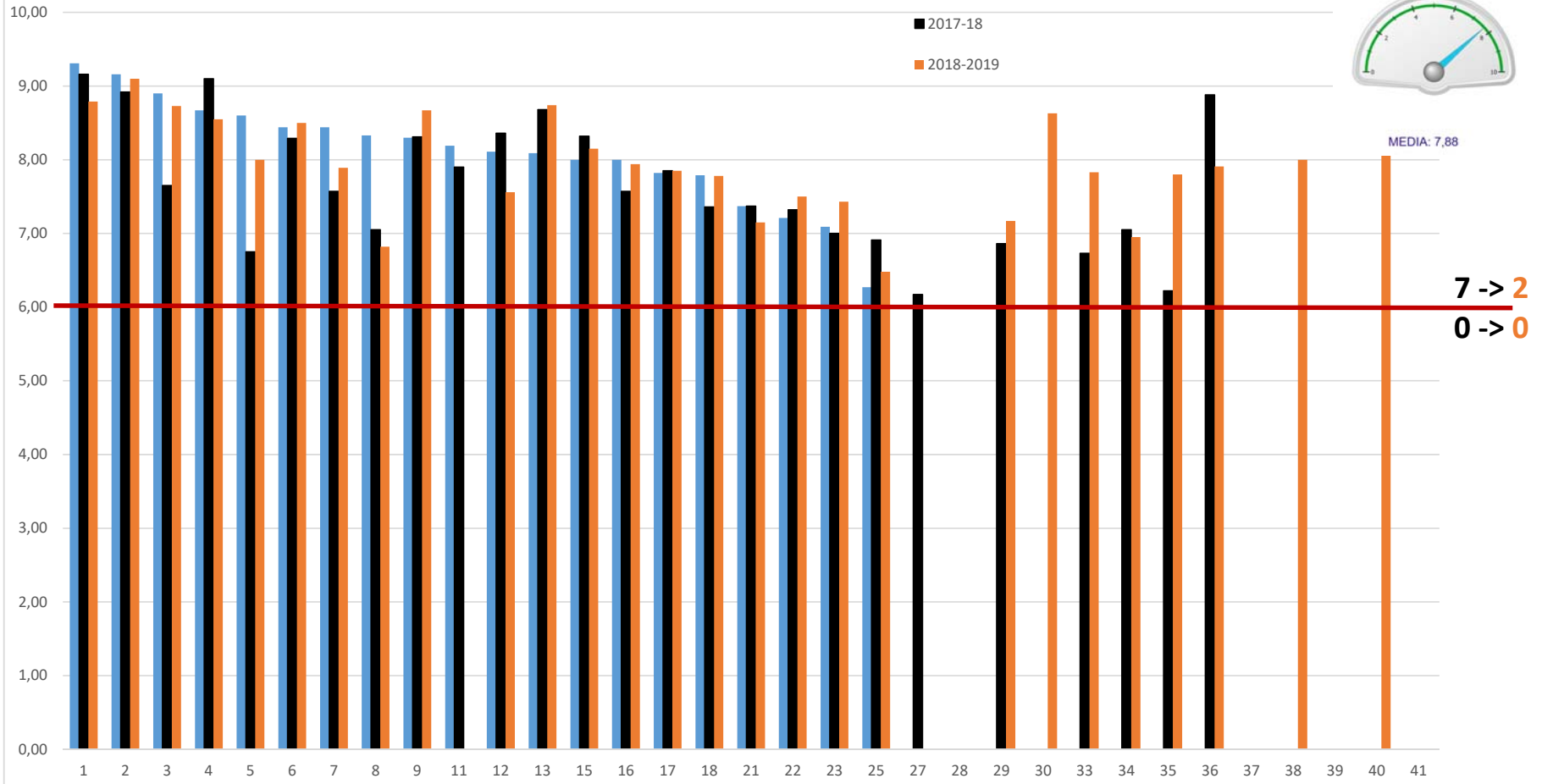


2 -> 3
1 -> 0

Soddisfazione

Soddisfazione Complessiva

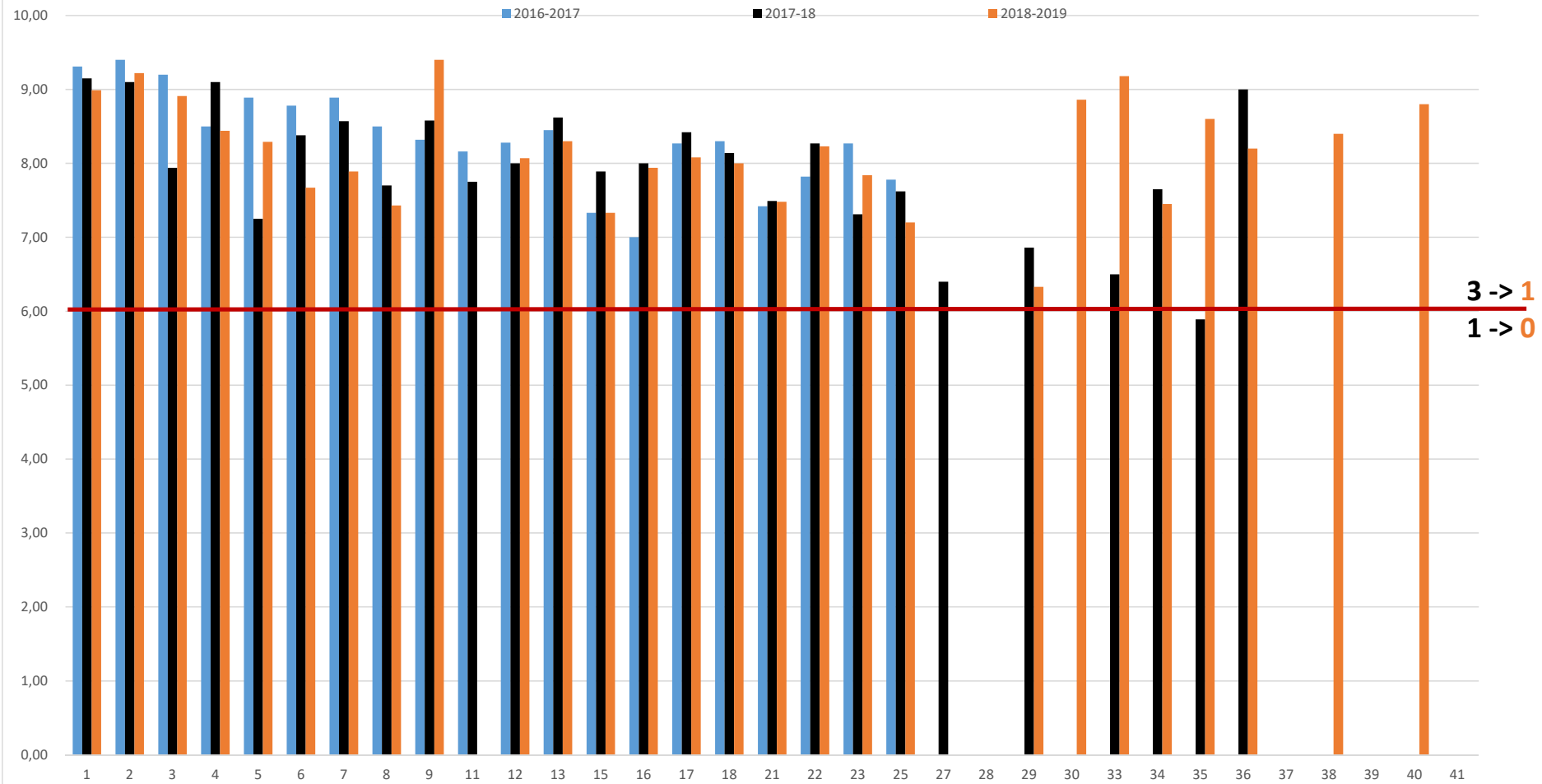
- 2016-2017
- 2017-18
- 2018-2019



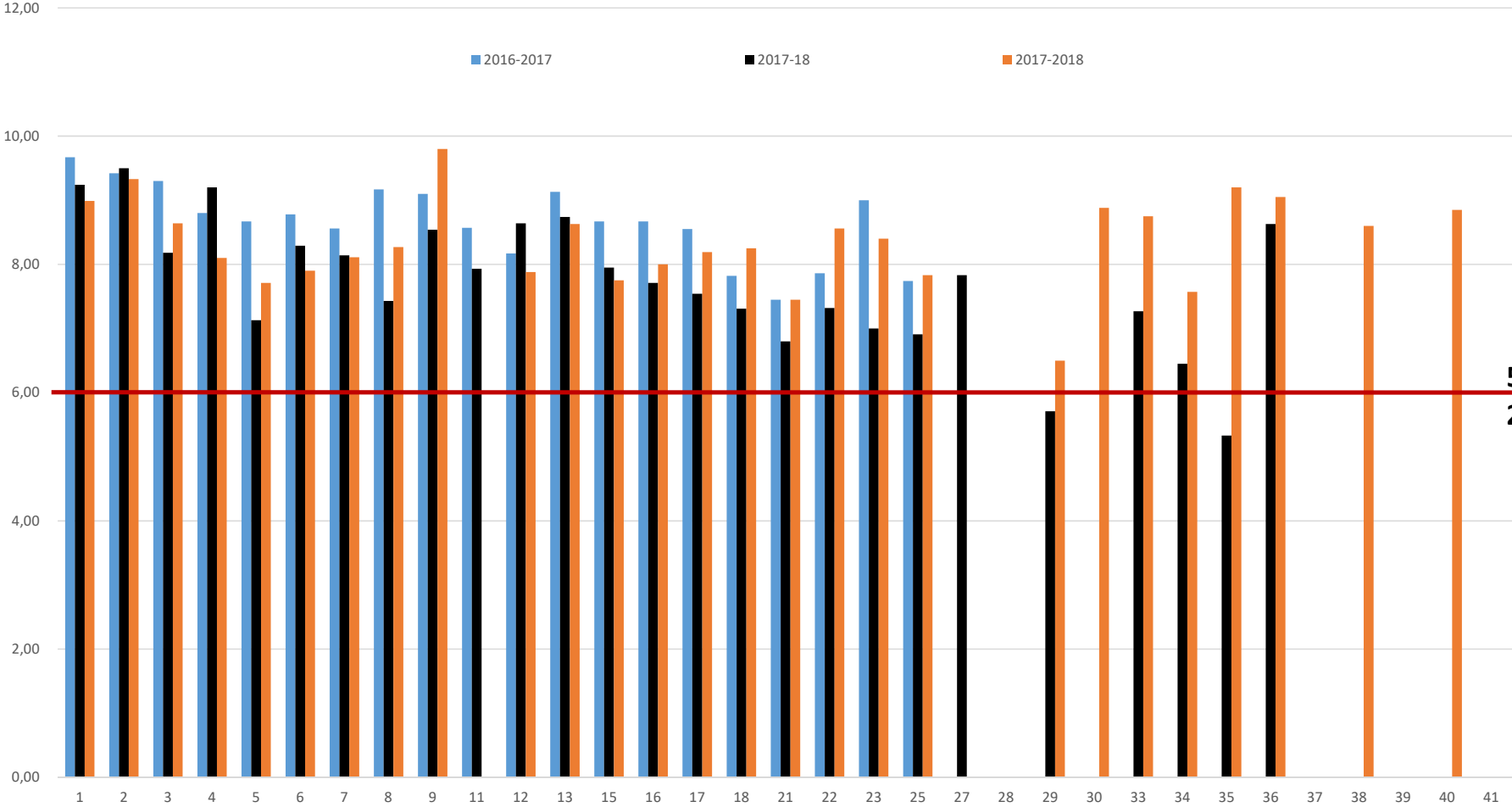
MEDIA: 7,88

7 -> 2
0 -> 0

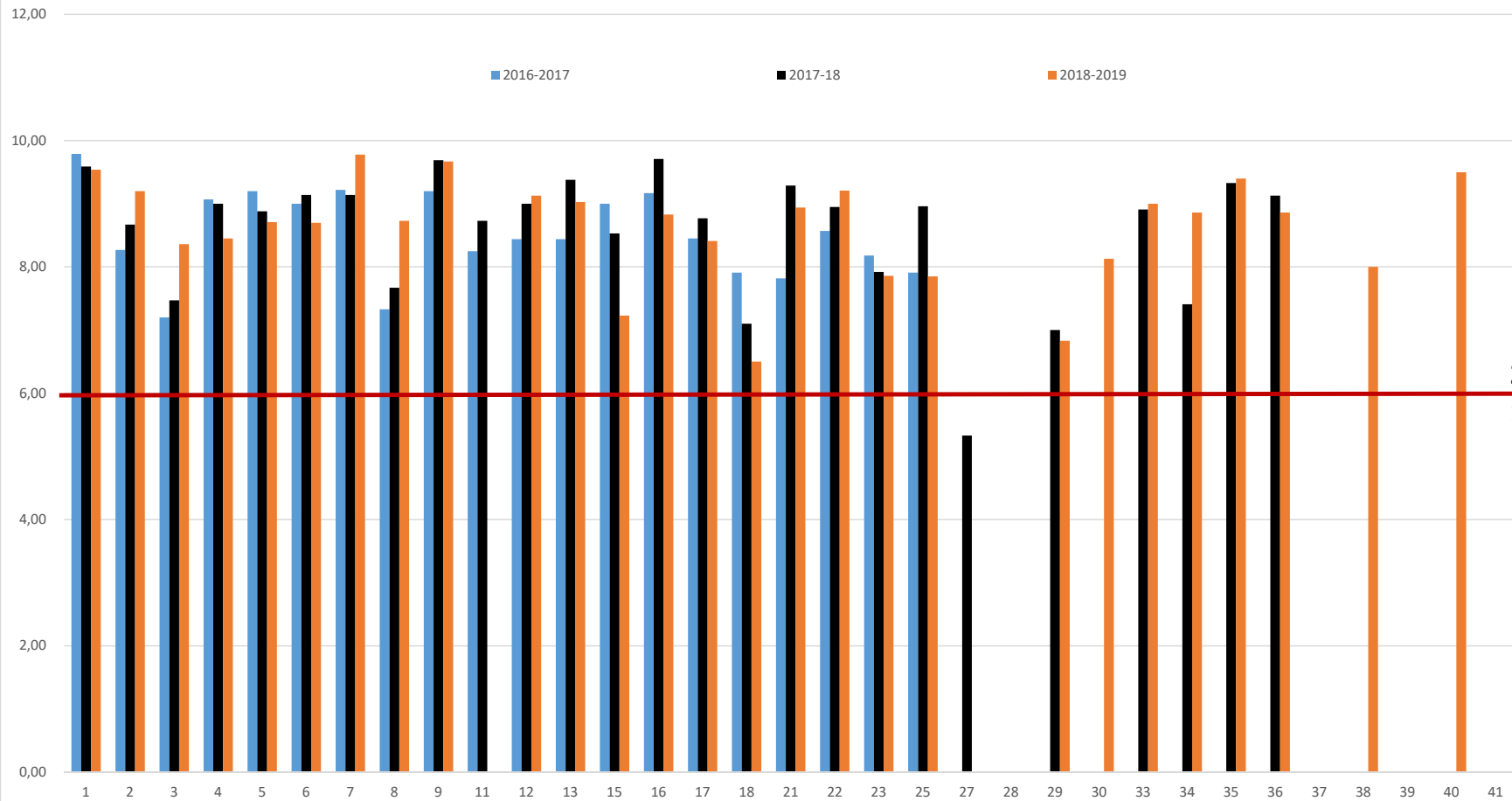
Obiettivi e contenuti



Chiarezza modalità esame

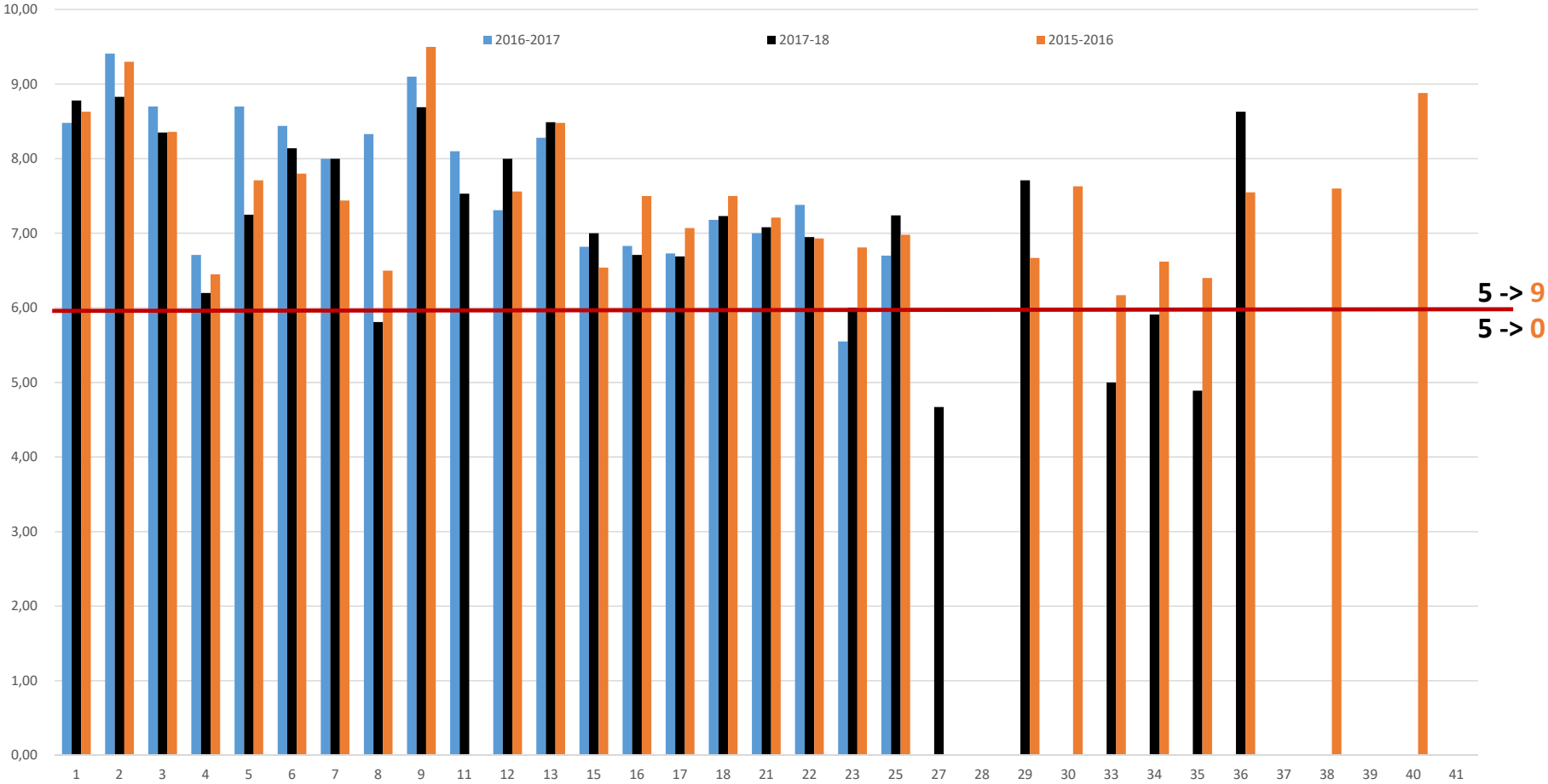


Rispetto orari lezione

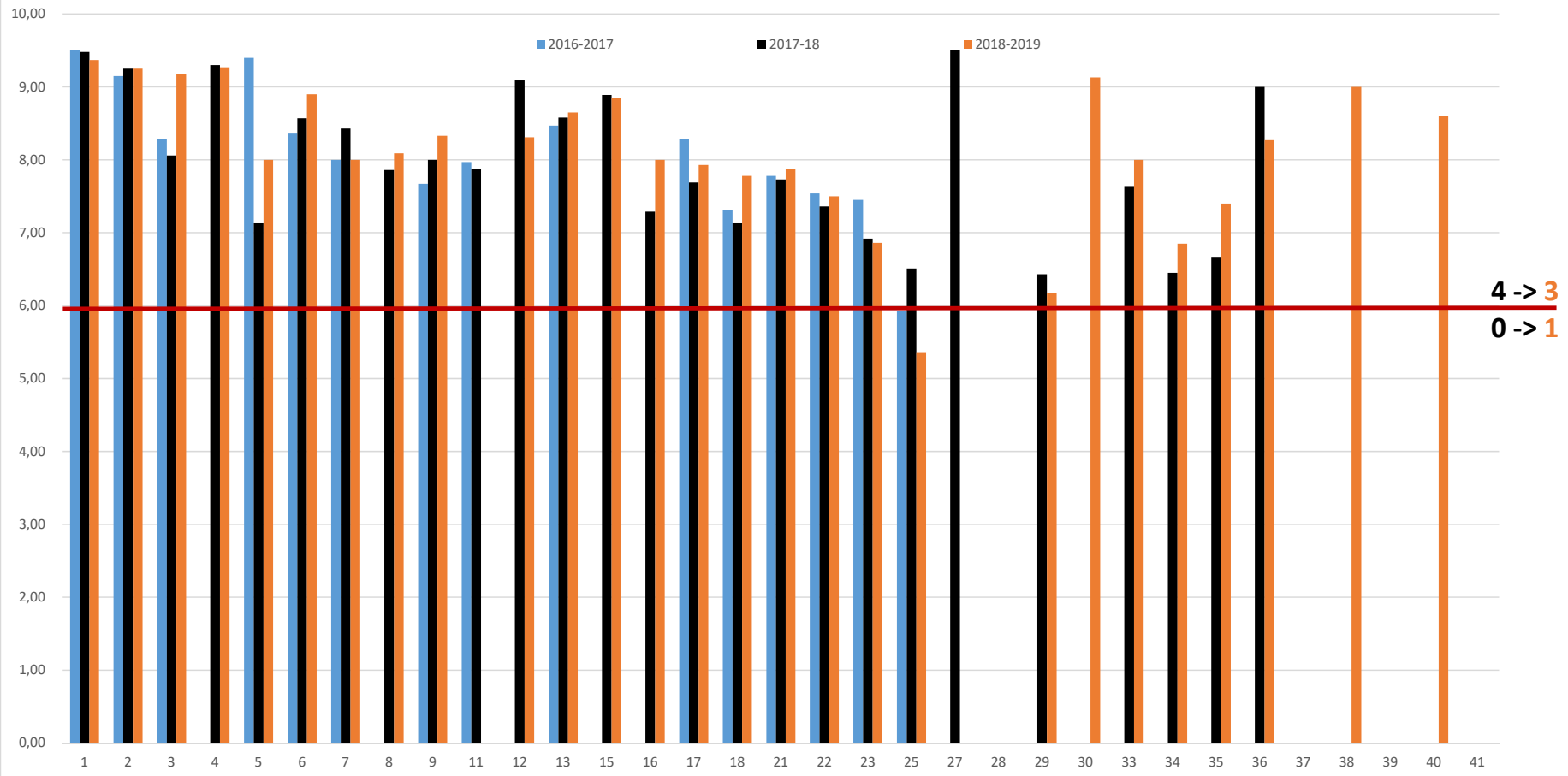


2 -> 2
1 -> 0

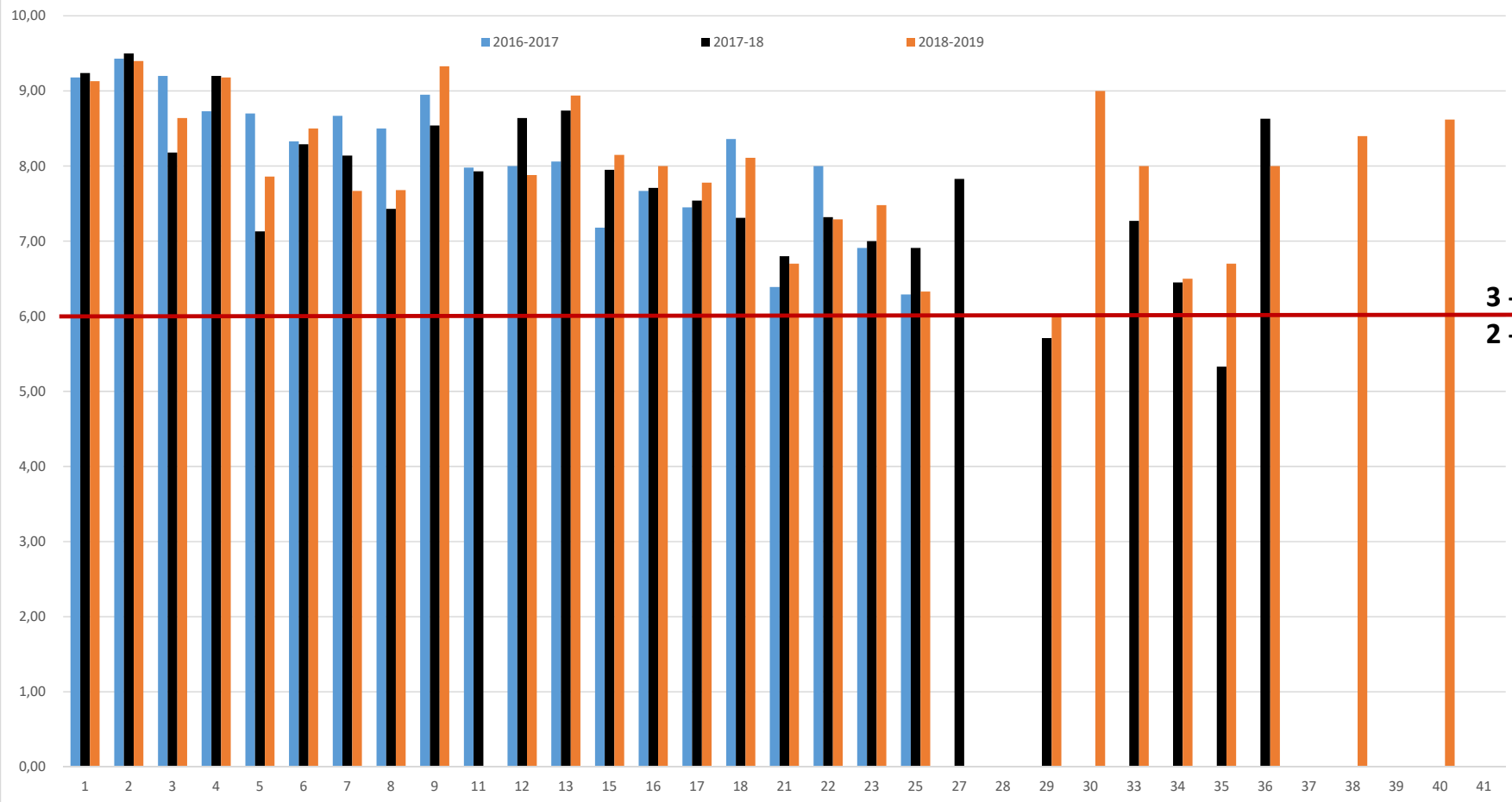
Materiale didattico consigliato



Stimolo interesse del docente

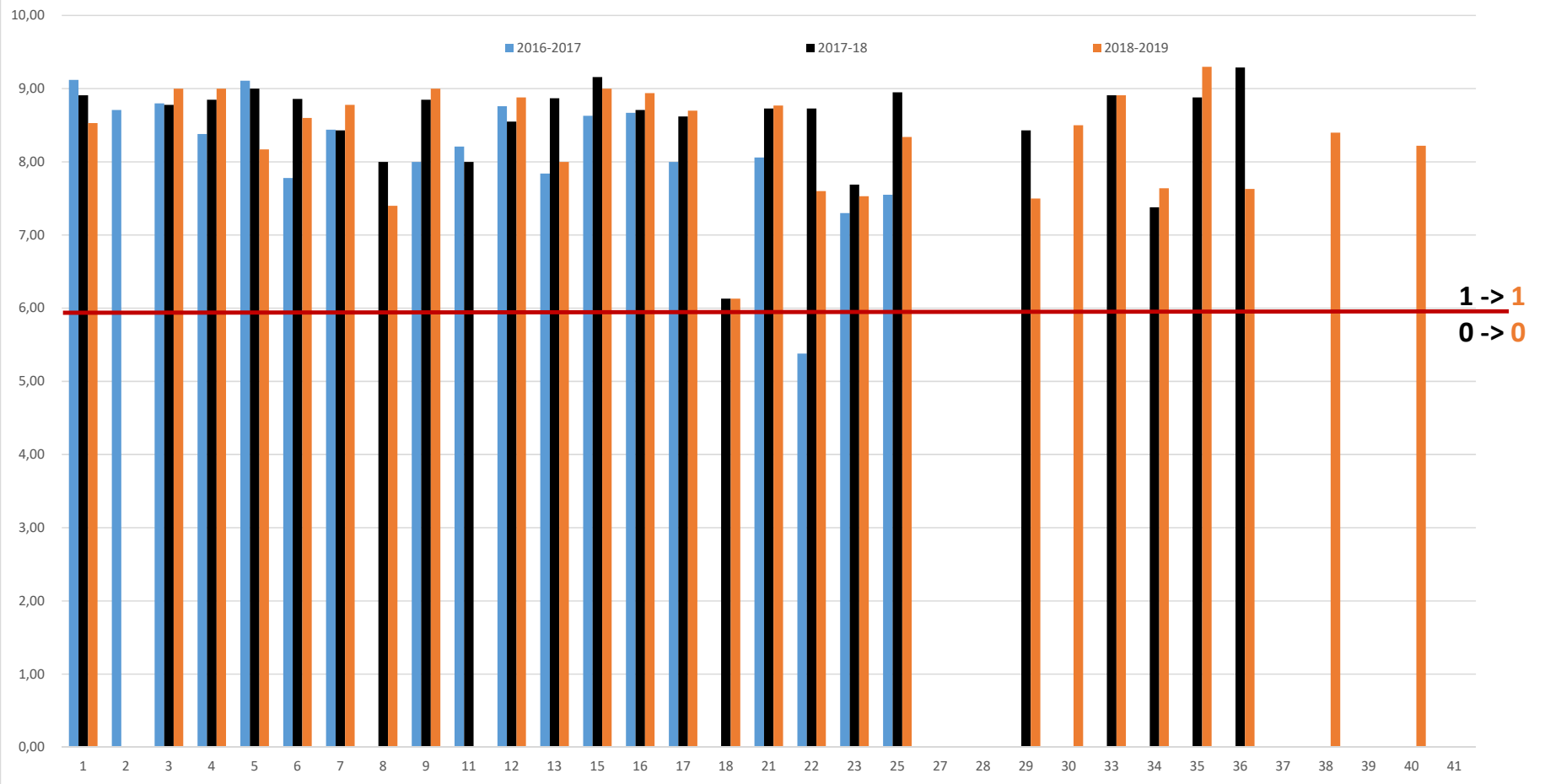


Chiarezza esposizione



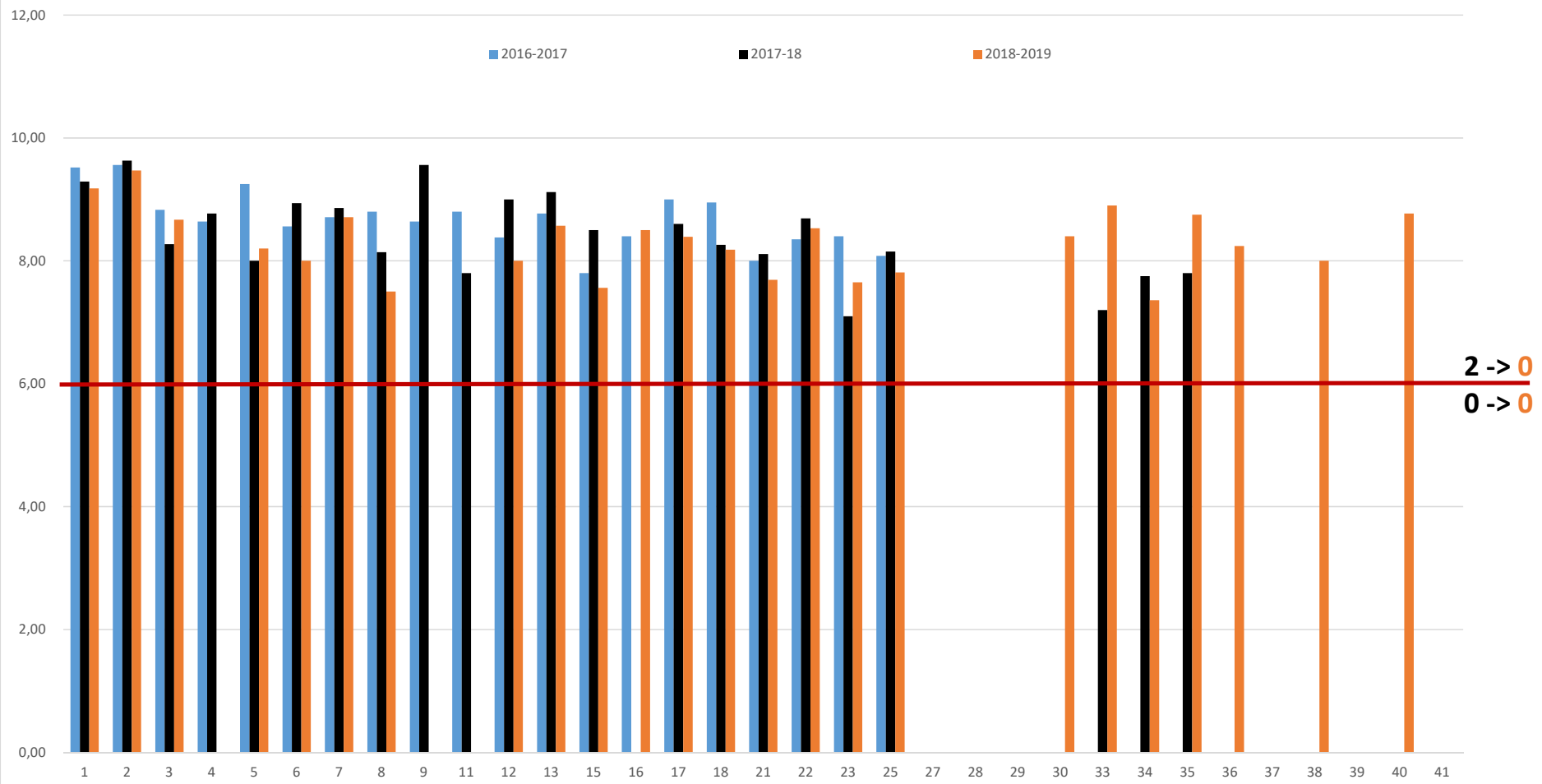
3 -> 5
2 -> 0

Adeguatezza Laboratori/seminari



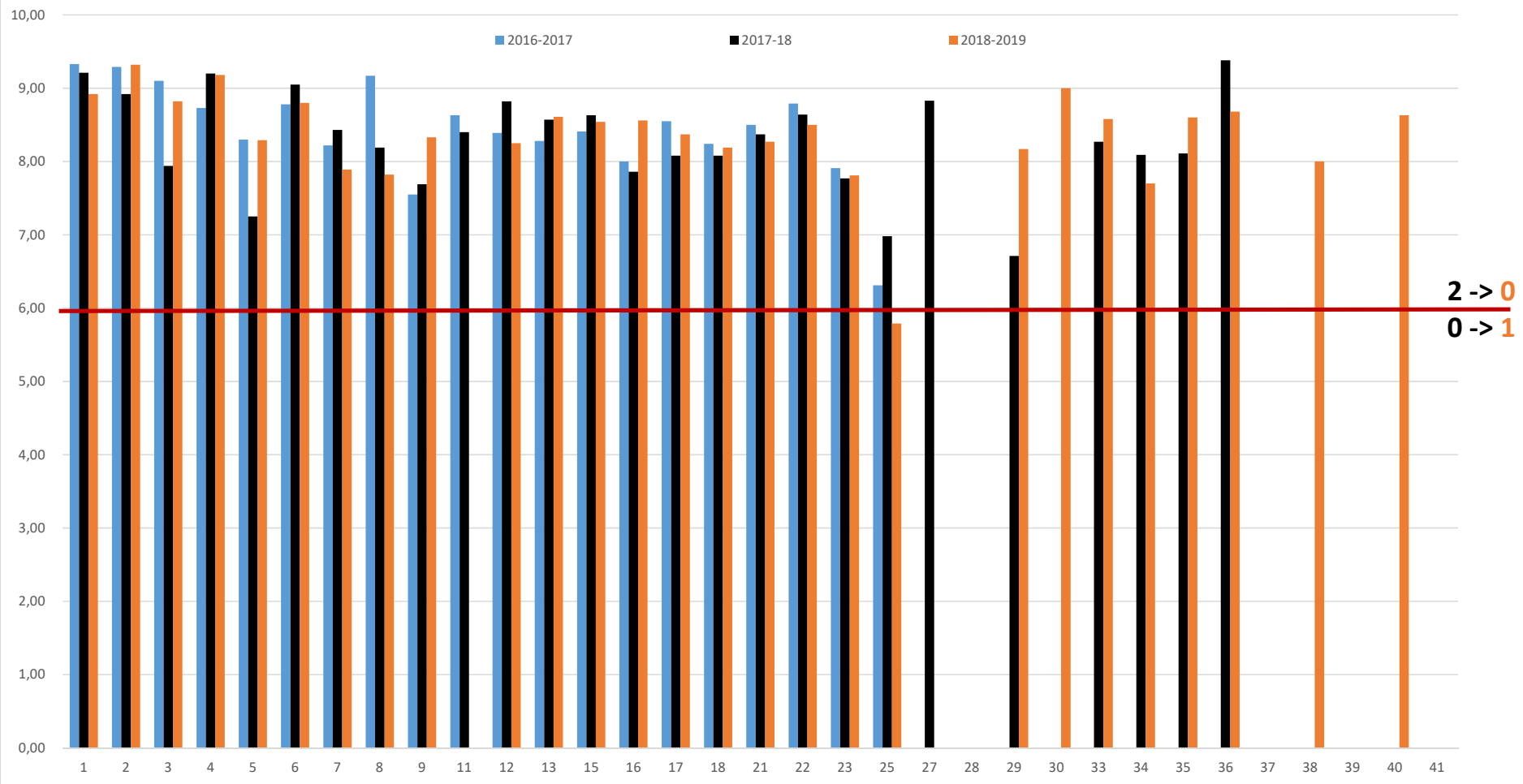
1 -> 1
0 -> 0

Coerenza con quanto dichiarato

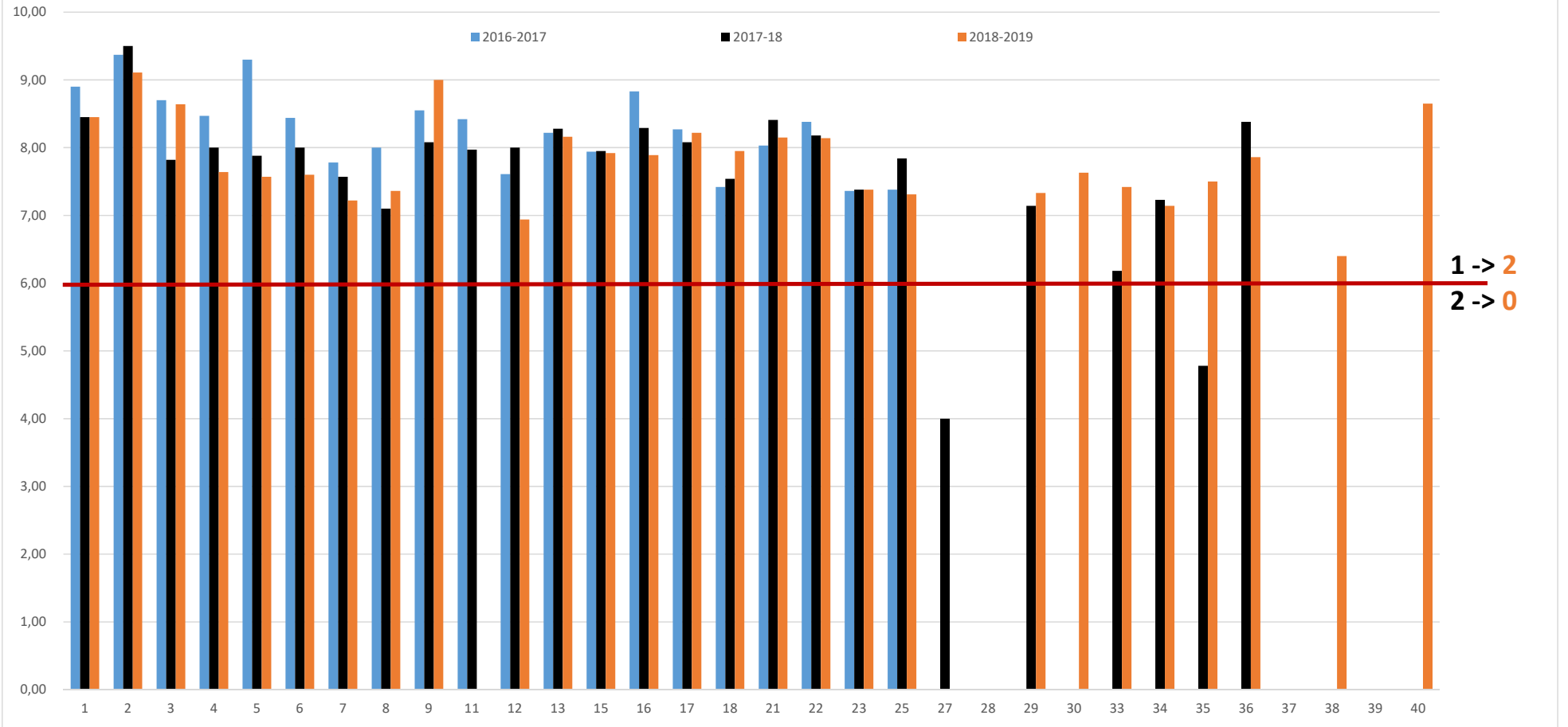


2 -> 0
0 -> 0

Interesse per i Contenuti (indipendente da giudizio)



Conoscenze preliminari (adeguatezza)



Carico Didattico

