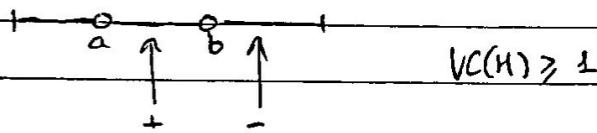


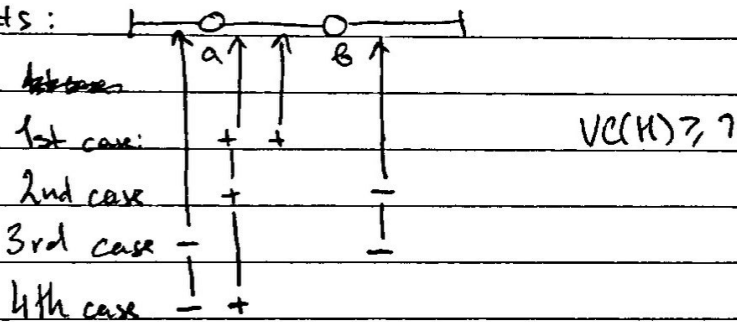
VC-Dimension of other hypothesis spaces, e.g. intervals in \mathbb{R} :

$$h(x) = +1 \text{ if } a \leq x \leq b \quad h(x) = -1 \text{ oth } \forall a, b \in \mathbb{R}$$

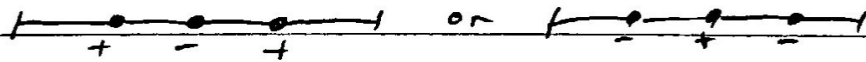
To find VC dimension we try to put points and see
 one point:



two points:



three points: impossible to implement situation



$$VC(H) = 2 \quad \square$$