



The 9th “Zhi-Hong” International Summer School of Advanced Materials (ISS-AM) –Future Materials

Time:
Jun 30-Jul 12, 2024

Venue:
SJTU, Shanghai

PROGRAM OVERVIEW

About ISS-AM

The “Zhi-Hong” International Summer School of Advanced Materials (ISS-AM) is organized by School of Materials Science and Engineering (SMSE) at Shanghai Jiao Tong University (SJTU), aiming at promoting the interactive cultural and academic exchange between top-level scholars and students from all over the world. The ISS-AM is named as “Zhi-Hong” not only to commemorate the school founder Professor Zhihong Zhou, but also to inspire the summer school participants since “Zhi-Hong” in Chinese means “being ambitious”.

“Zhi-Hong” ISS-AM is a two-week program with one theme every

year. “Future Materials” will be the theme of the program in 2024. In the last eight years, the 1st to 8th “Zhi-Hong” ISS-AM were organized successfully. 167 foreign students from over than ten countries and 214 outstanding Chinese students have been selected to attend the past eight events. Many renowned experts and scholars from SJTU and foreign institutes, e.g. Harvard University, Northwestern University, The Ohio State University, University of Cambridge, KTH Royal Institute of Technology, Osaka University, Monash University, have been invited to give academic lectures. Join “Zhi-Hong” International Summer School at SJTU for a once-in-a-lifetime opportunity! You’ll expand your horizons and make new friends with peers from around the world while studying at the top excellent university in China.

INTRODUCTION TO SJTU

- Since its founding in 1896, Shanghai Jiao Tong University (SJTU) has become a comprehensive, research-oriented, and internationalized top university in China.
- SJTU was ranked No. 51 in 2024 QS world university rankings.
- SJTU was ranked No. 43 in 2024 Times Higher Education World University rankings.
- The number of majors at SJTU listed in top 50% was 22 in 2024 ARWU.

INTRODUCTION TO SMSE

Ranked No. 28 in 2023
QS world university

Authorized as the
first-class National Key
Discipline since 2007

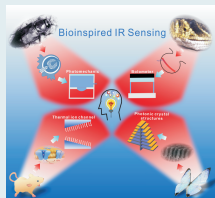
**Materials
Science and
Engineering
(MSE) program
in SJTU**

Ranked No. 16 in 2023
USNews world university

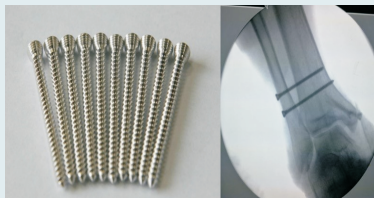
listed in world
top 1‰ discipline
of ESI in 2023



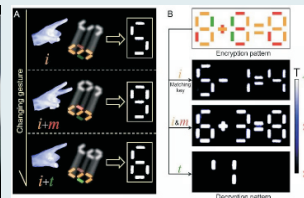
Mg Based Hydrogen Storage
Materials and Applications



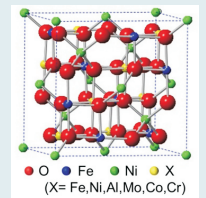
Bioinspired Thermal
Detection



Biodegradable JDBM Magnesium
Alloy Orthopaedic Implants



The Gesture as A Matching
Key for Information Decryption



Crystal Structure Model of
Multicomponent Porous
Spinel Nanowires

ACTIVITIES

1) Academic lectures

Academic lectures about future materials will be given by distinguished professors from overseas universities and SJTU.

2) Poster shows

All participants are required to prepare their academic posters in advance. During the summer school, the most popular poster and the best poster will be voted to pick out.

3) Colorful trips

Campus tour, Shanghai city tour, and visiting the research labs affiliated to SMSE at SJTU will be arranged.

4) Student seminars

All participants will be teamed up into several study groups. Students in each group will work together on one topic. Groups will make a final competition with each other through group presentations. The faculty committee will choose the best group and present the group members "Award of Excellent Team".

5) Culture activities

Some Chinese traditional cultural experiences, such as Chinese culture activities and culture festivals.

6) Special programs

Special programs will be interspersed before or after the lectures, including interesting games and fun sports meeting.

ELIGIBILITY

Graduate and senior undergraduate students who are majored in Materials Science and Engineering (MSE), or any other majors related to MSE, such as mechanical engineering, physics, and chemical engineering.

A total of 40 domestic and overseas participants will be recruited.

ABOUT FACULTY

The lecturers will be from:

USA: Northwestern University

EU: KTH Royal Institute of Technology (Sweden)

UK: University of Cambridge

Asia: Nanyang Technological University (Singapore)

China: Shanghai Jiao Tong University

For most updated list of confirmed lectures, please visit the website of "Zhi-Hong" ISS-AM: <https://smse-iss.sjtu.edu.cn/>

FEES & SCHOLARSHIPS

Tuition: 3000 RMB (about \$430)

Covers accommodation, cultural activities and field trips.

(Participants are required to buy travel insurance in their own country BEFORE coming to China.)

Type A: "Zhi-Hong Future" Scholarships

Amount: 8000 RMB/person

Number: 5

Each "Zhi-Hong Future" scholarship covers the tuition fee (3000 RMB) and part of the international travel costs up to 5000 RMB/person.

Type B: "Zhi-Hong Excellence" Scholarship

Amount: 3000 RMB/person

Number: more than 85% of the enrolled participants

Each "Zhi-Hong Excellence" scholarship covers the tuition fee (3000 RMB).



HOW TO APPLY

For international students: apply online <http://apply.sjtu.edu.cn>

For Chinese students: The applications should be submitted to Ms. ZHANG by email at (zh_iss@sjtu.edu.cn).

The application materials include 1) application form, 2) CV, 3) academic transcripts, 4) IELTS/TOEFL/CET6 score certificate or any other certificate showing the competency of English (waived for native English speakers), 5) a one-page personal statement.

Application deadline: **May 12, 2024**

Selection results will be notified by email to the applicants at the end of May 2024.

PROGRAM AGENDA (Tentative)

Day	Time	Event
1	Jun 30, Sun	Registration
2	Jul 1, Mon	Opening Ceremony, Ice-break, Campus Tour
3	Jul 2, Tue	Lectures, Special Program
4	Jul 3, Wed	Lectures, Tour of SMSE
5	Jul 4, Thu	Lectures, Social Party
6	Jul 5, Fri	Group Discussions, Field trip
7	Jul 6, Sat	Culture Activities
8	Jul 7, Sun	Free Time
9	Jul 8, Mon	Lectures, Cultural Festival
10	Jul 9, Tue	Lectures, Special Program
11	Jul 10, Wed	Lectures, Field trip
12	Jul 11, Thu	Lectures, Group Discussions
13	Jul 12, Fri	Group Presentation, Awards & Closing Ceremony

CONTACT US

Coordinator: Renlei ZHANG

Email: zh_iss@sjtu.edu.cn

Tel: +86-21-54747664

Address: Room 4003, Xuzuyao Building,
School of Materials Science and Engineering,
Shanghai Jiao Tong University, 800 Dongchuan Road,
200240, Shanghai

Website: <https://smse-iss.sjtu.edu.cn/>



